



OLAF-DUNSKI-O.DUN



SLCTD Dsgns



|   |       |   |
|---|-------|---|
| 1 | a.b   | Public Use, Urban Roof - Theatre of Public Life |
| 2 | a.b.c | University Building - CMSC training facility    |
| 3 |       | Multi-family housing - Malmö Enclave East       |
| 4 |       | Single-family housing - Malmö Enclave West      |
| 5 |       | Renovation, Addition - Identity of a street     |

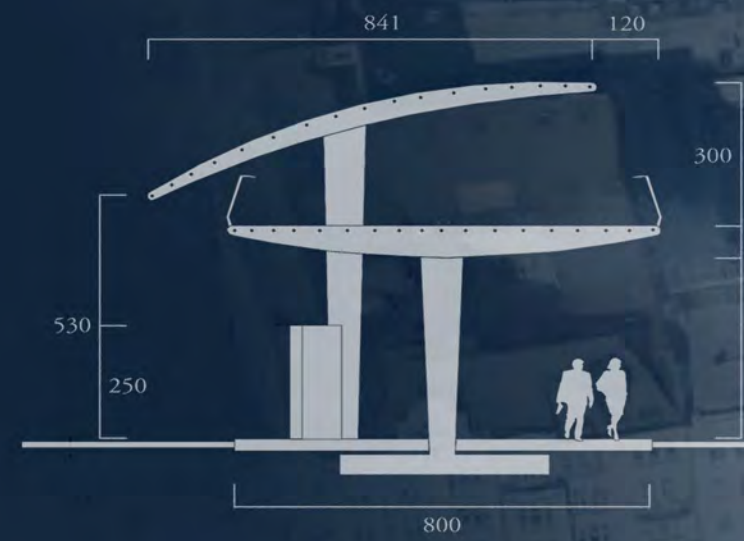
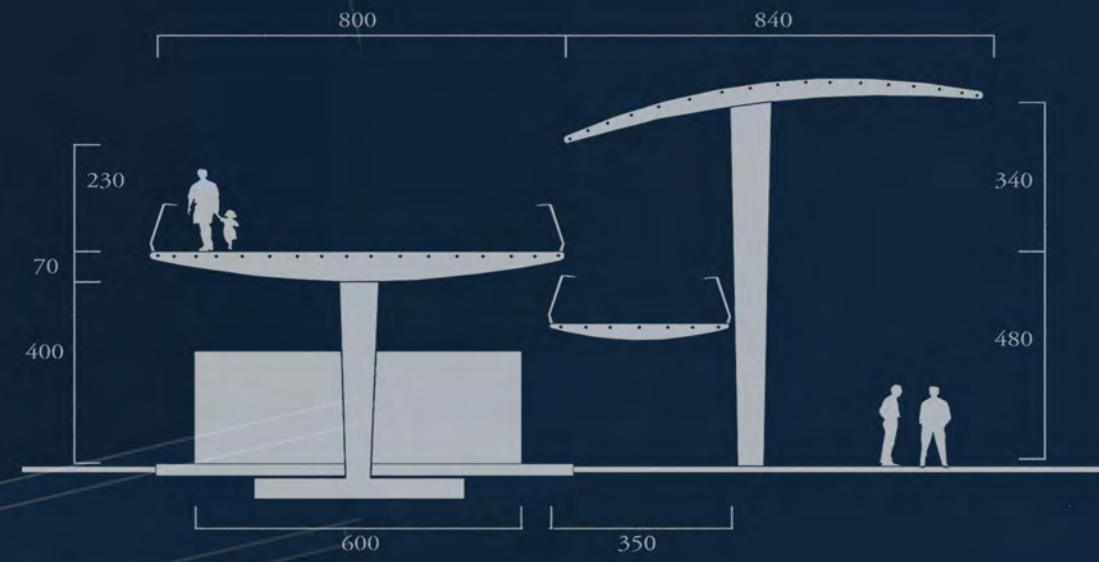


|  |     |    |
|--|-----|----|
| Parametric design - 'Godzilla' Pavilion design & model | a.b | 6  |
| Urban Regeneration - Zhangjiakou Impulse               | a.b | 7  |
| Fantasy architecture - Master's Essentials             |     | 8  |
| Industrial Design - GraviLight hanging lamp            |     | 9  |
| Industrial Design - 90 Deg standing lamp               |     | 10 |





Realisation of the Urban Roof concept, a multi-level construction providing the city square with a public terrace and scenery of rotating walls fixed on pillars. The rotating rings can be freely moved by people, creating one interior, a series of spaces, or an open passage.



### Theatre of Public Life at Gustav Adolfs Torg in Malmö

Olaf Dunki & Jon Fjellstad

Gustav Adolfs Torg is a vast public space that has what it takes, both in scale and location, to become the beating heart of the common, democratic Malmö. By employing the concept of a multi-leveled Urban Roof we propose to unite the cozy feel of an old town square typical for the Lilla Torg, with the breathing spaces of the city beyond the canal ring.



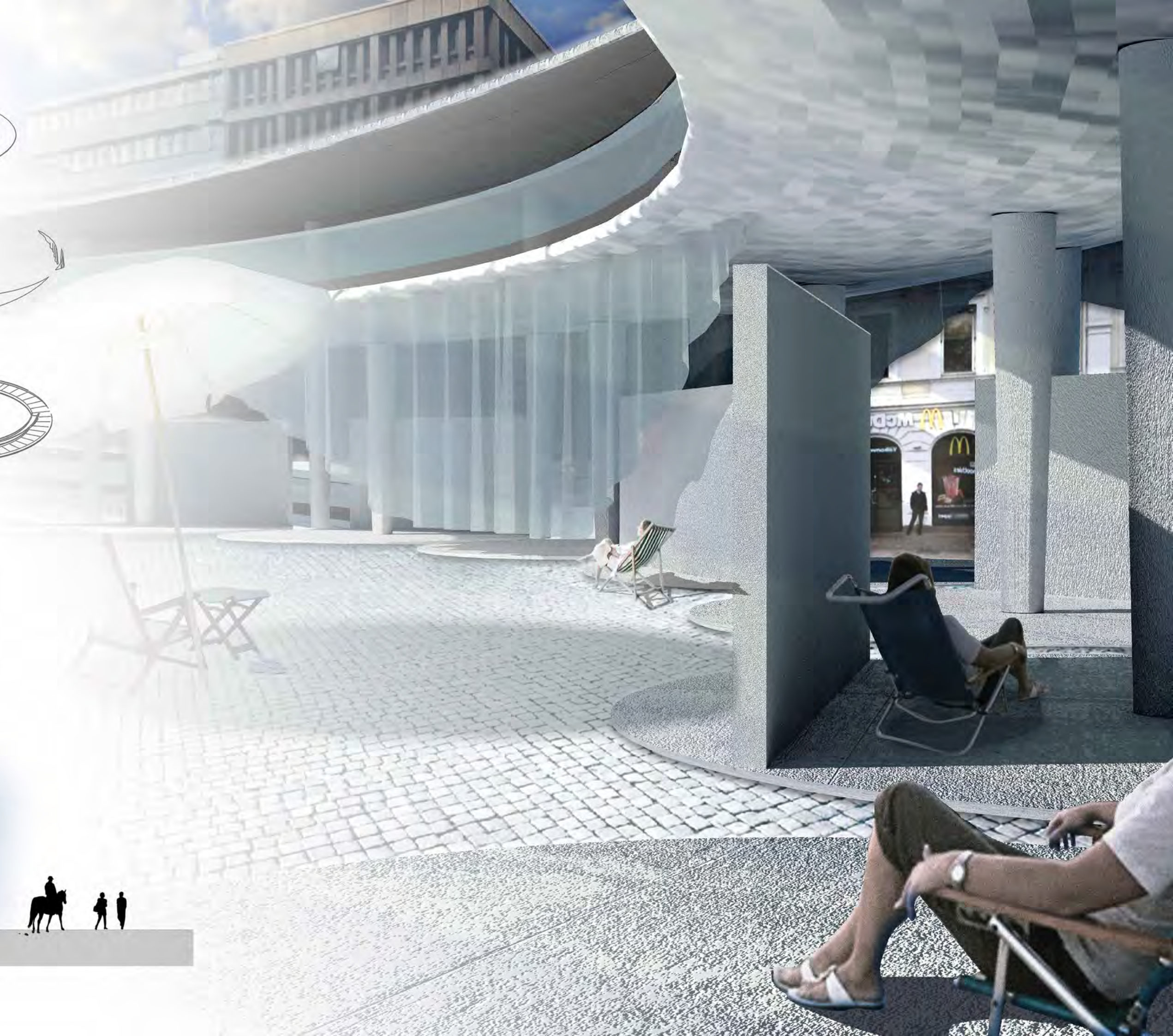
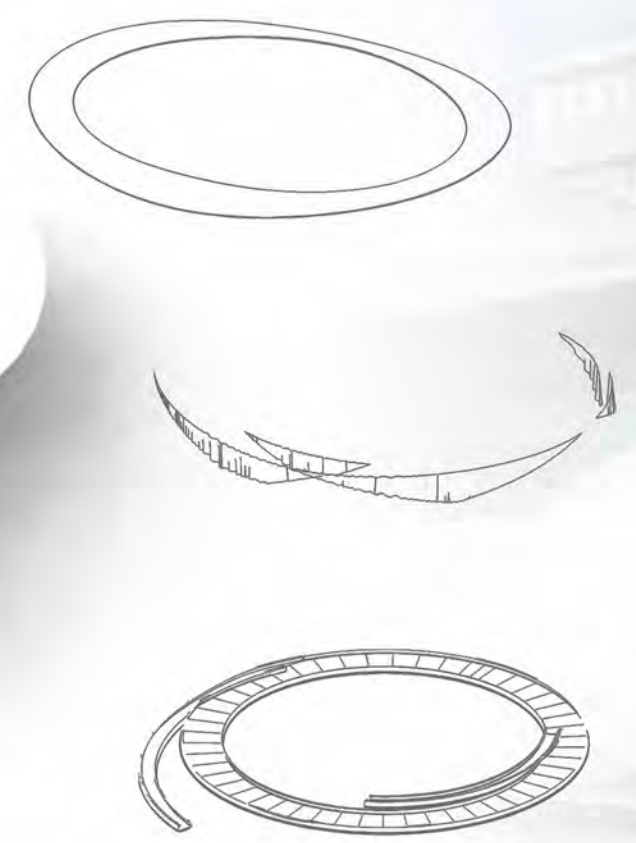
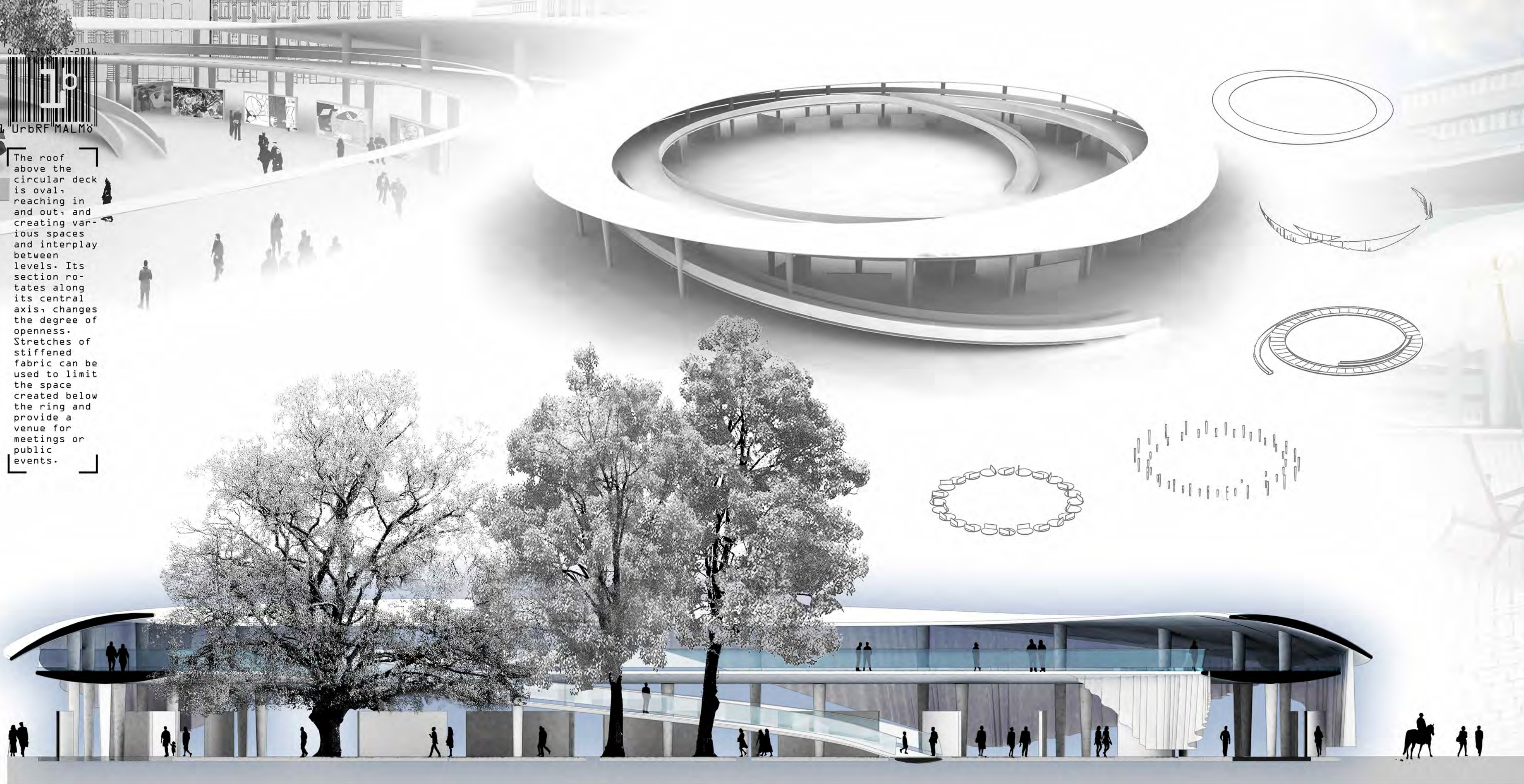
The Theatre is not strictly a building, but a solution for a spatial structure. It strives to relate open to closed, small to big, and private to public, for an arrangement of space which is socially meaningful.







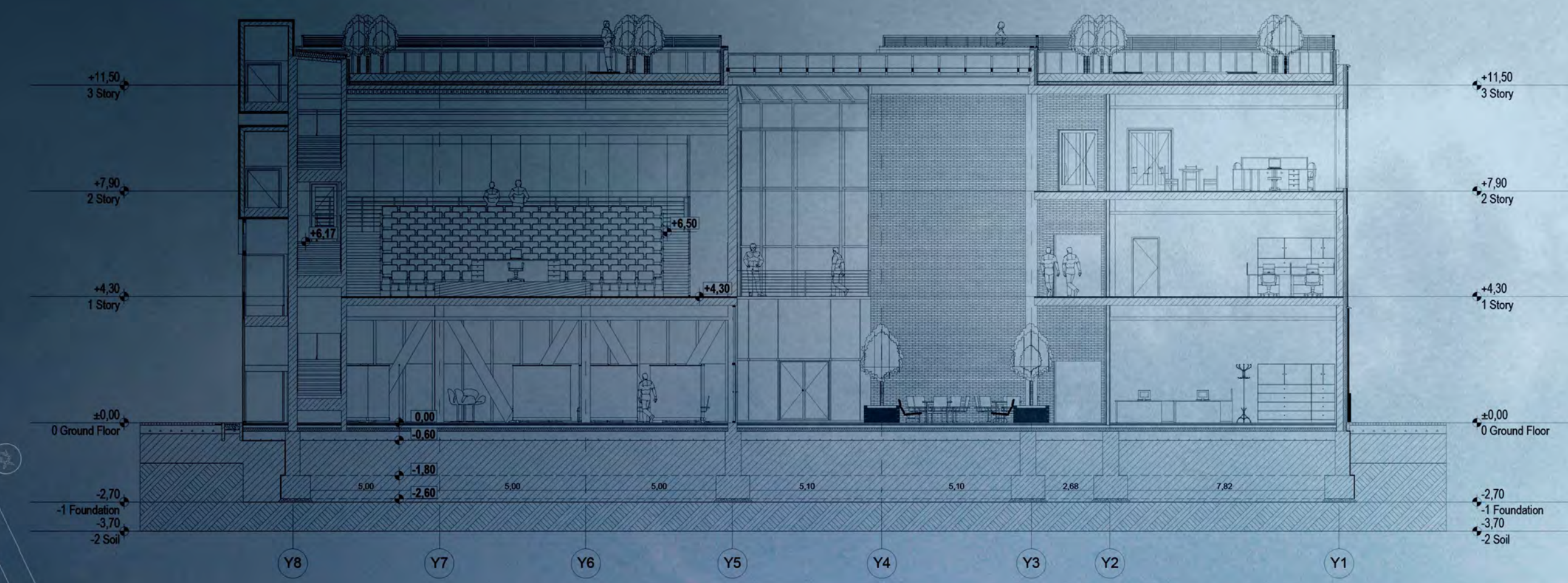
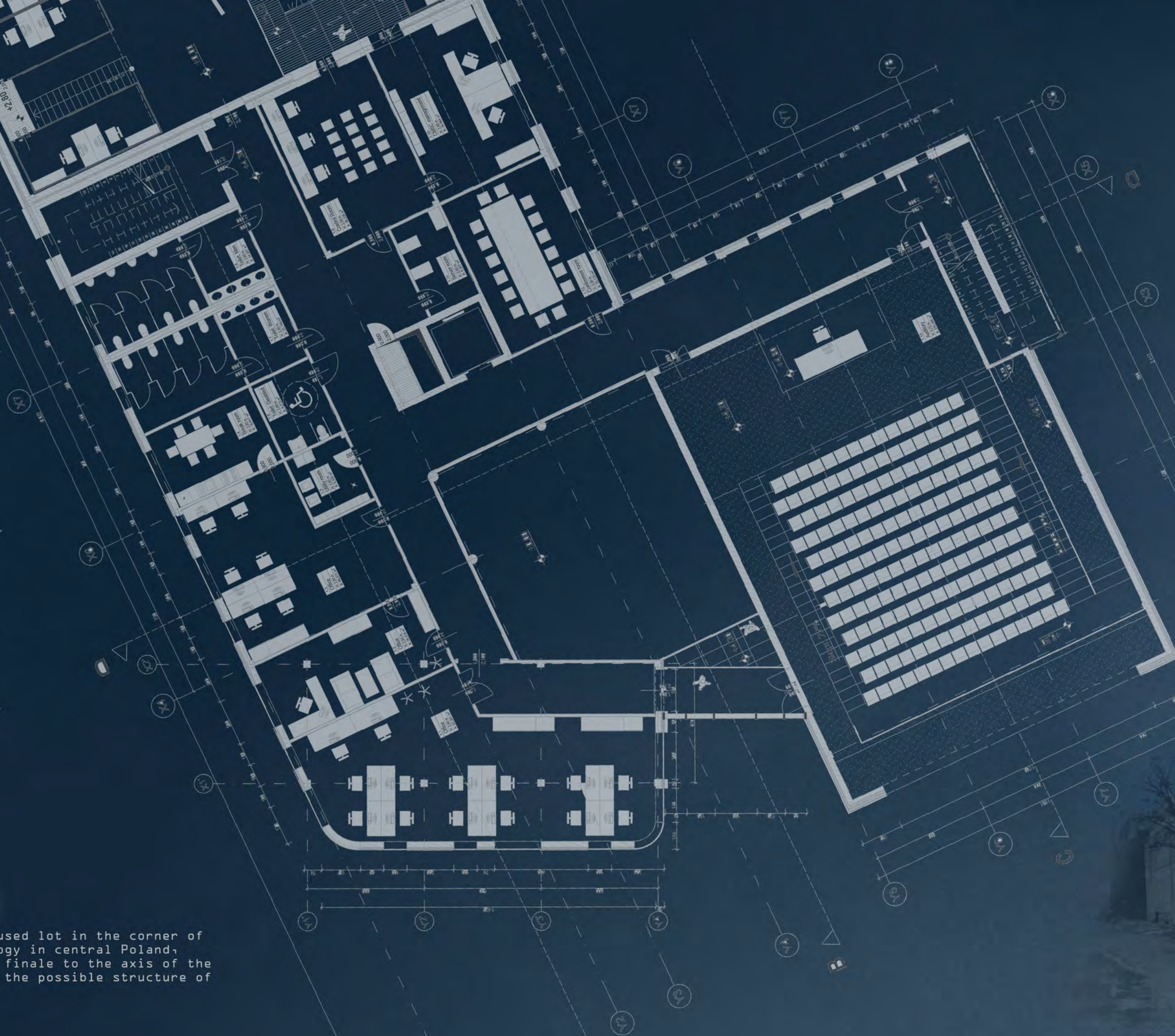
The roof above the circular deck is oval, reaching in and out, and creating various spaces and interplay between levels. Its section rotates along its central axis, changes the degree of openness. Stretches of stiffened fabric can be used to limit the space created below the ring and provide a venue for meetings or public events.







The CMSC is a new academic facility for the campus of the technical university in Lodz. Apart from the Simulation Centre, the building houses an exhibition space, a lecture hall, office spaces for the academic organisations (BEST, ESN-EYE, The University Development Foundation etc.) and a 24h work space for students.



### Construction Management Simulation Centre for Lodz University of Technology

The building occupies a strategic, but so far unused lot in the corner of the university campus Lodz University of Technology in central Poland, providing both a gateway to the university and a finale to the axis of the adjacent city park. The design investigates also the possible structure of the building, including construction details.







## Construction Management Simulation Centre for Lodz University of Technology

The main focus of the CMSC building is a new home for the training facility based on the 3 centres existing in the world which offer modern simulation technology to the construction industry. The Simulation Hall contains a set of typical construction site huts arranged around a central space. Each container is a fully equipped office of a site supervisor. The space in the middle of the hall is flanked by a curved screen, 16m long, which provides the panoramic display of the computer model of a construction site on which the training session is based.

Simulation Hall



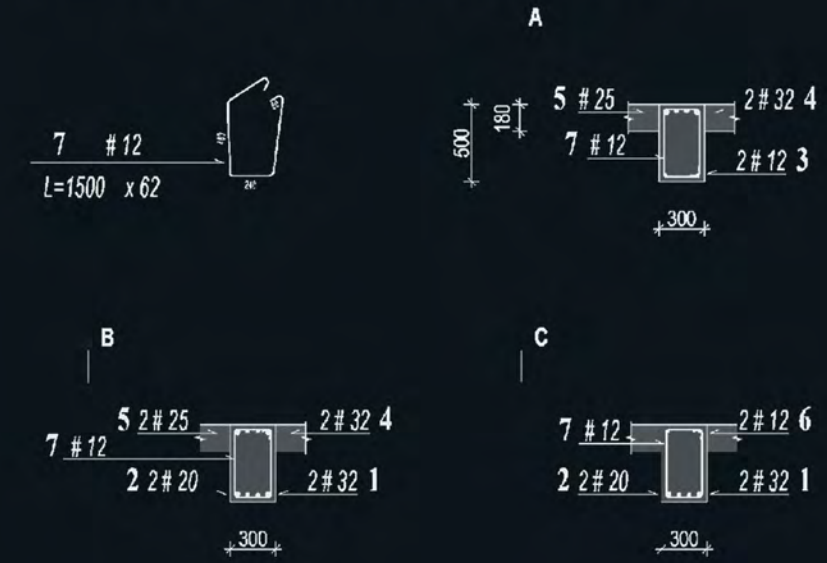




The CMSC is a new academic facility for the campus of the technical university in Lodz. Apart from the Simulation Centre, the building houses an exhibition space, a lecture hall, office spaces for the academic organisations (BEST, ESN-EYE, The University Development Foundation etc.) and a 24h work space for students.

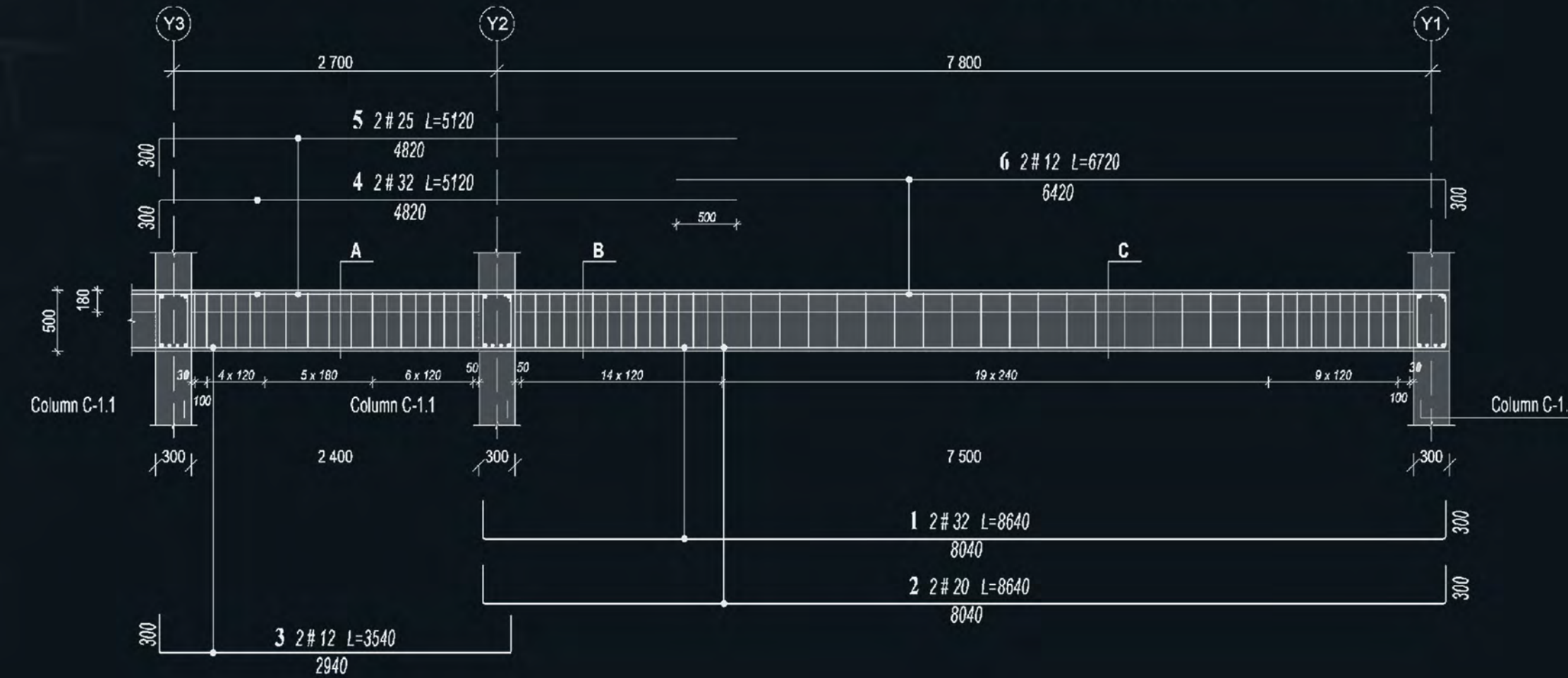


Layout of beams & cross-sections



Detail: BEAM B-1.1

Concrete class: C 25/35 Steel grade: A-III N  
Cover thickness 3 cm

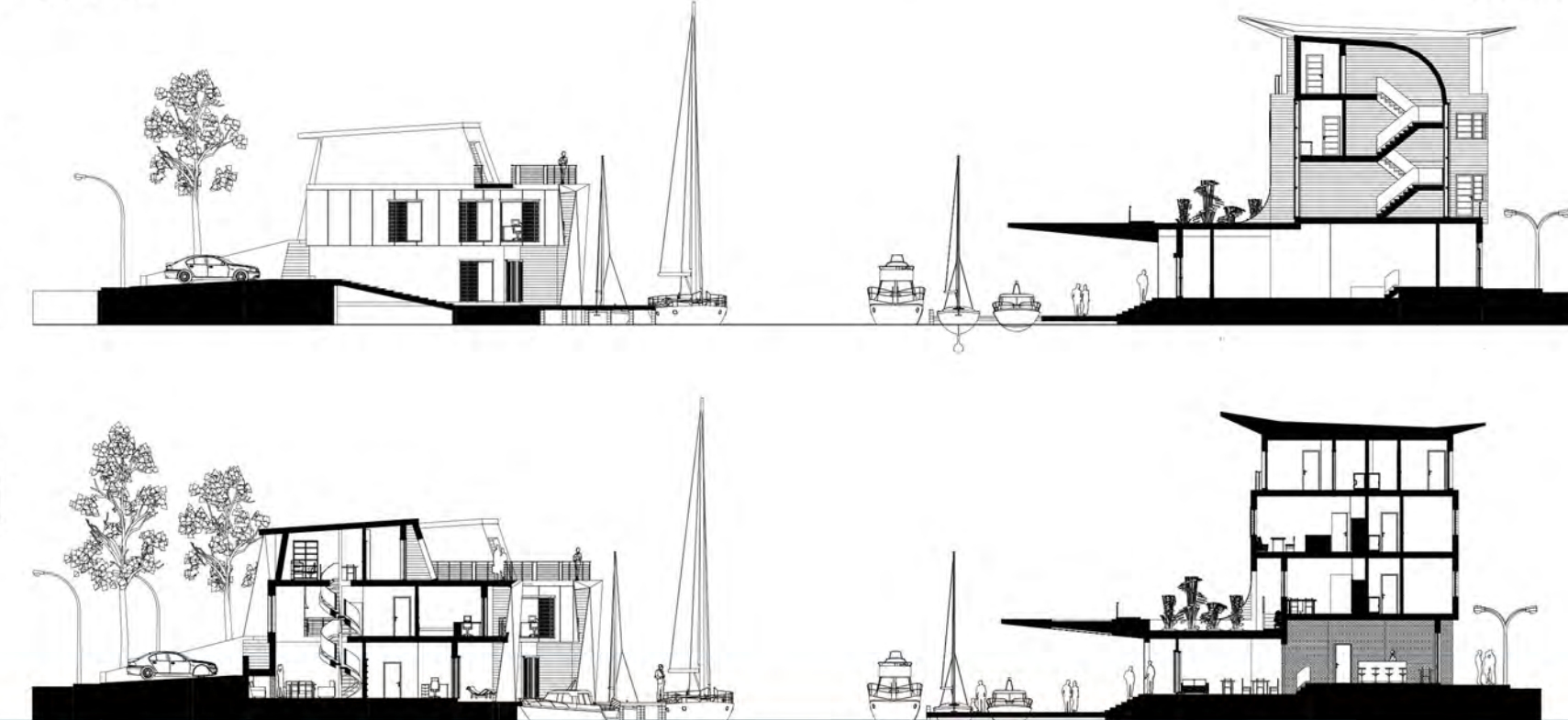




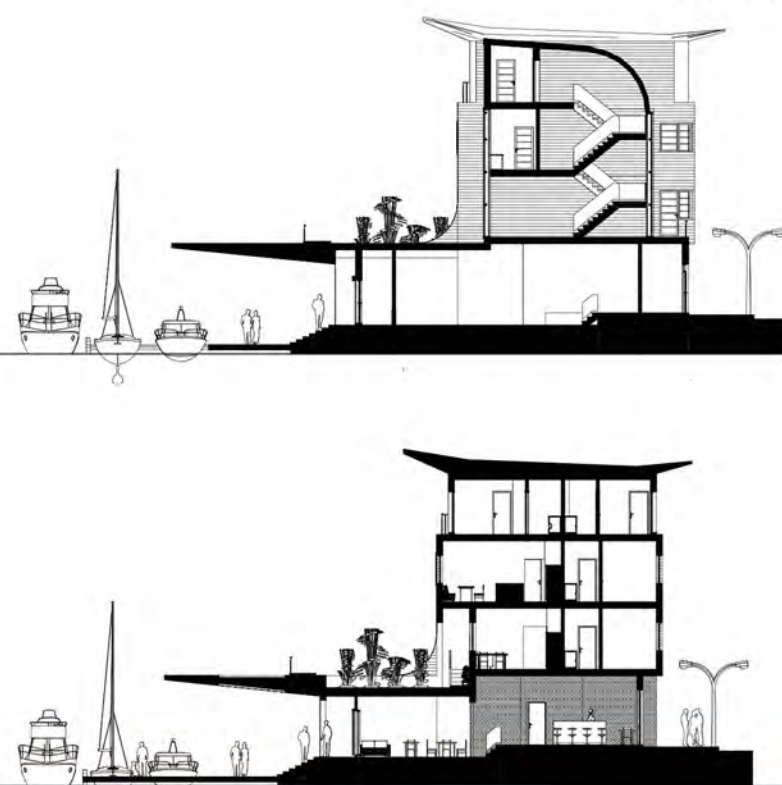


**Malmo Canal Enclave**  
 Redevelopment of the shipyard harbour

West Side



East Side



The Malmo Canal Enclave project draws qualities from the waterfront enclaves in the harbour of Malmo. Meeting point of canal and city shore is treated with various sections, that strive to overcome the level difference and bring private and public city life to the canal side by overlapping their paths.

By building a city we, humans, aim at creating a superior habitat that should enhance and extend all human activities, a large scale home where the time of day or the weather become functions of scenography, not a barrier or a limit.



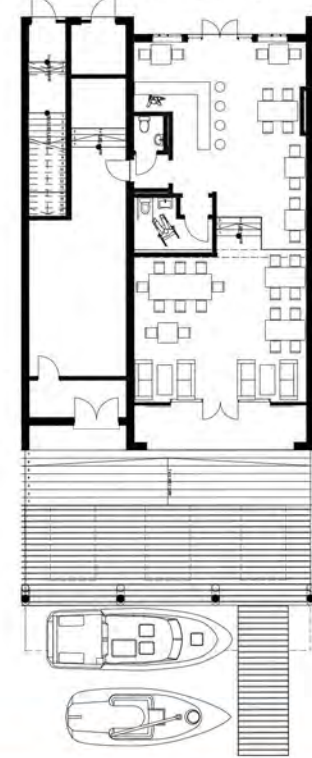
Basing on this idea, the Canal Enclave project tries to draw attention to the use of canals in the harbour area of the city of Malmo. The main focus of the project is to create dwelling types balancing on the border between the canal and the city. The goal is to overcome the strict level differences and to fill the canal sides with overlapping routes of private and public city life.



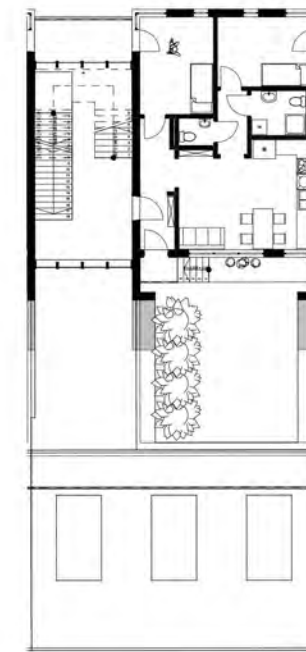
**East Side**  
 Malmo Canal Enclave

A 4-level residential block - basic structure (to be built upon):  
 4 varied flats & commercial space with a roofed waterfront.  
 The layout reverses the principle of Type 1 by providing public access to the water and leaving private space to overlook the canal from above.

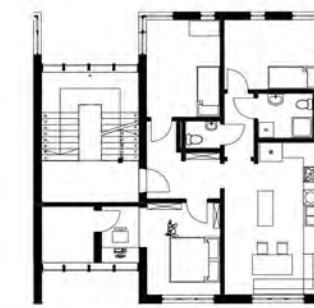
Level 0  
 > Commercial space (restaurant) 100 m<sup>2</sup>  
 > Technical backup (kitchen/storage) 48 m<sup>2</sup>



Level +1  
 > 2-bedroom flat 63 m<sup>2</sup> + terrace 43 m<sup>2</sup>



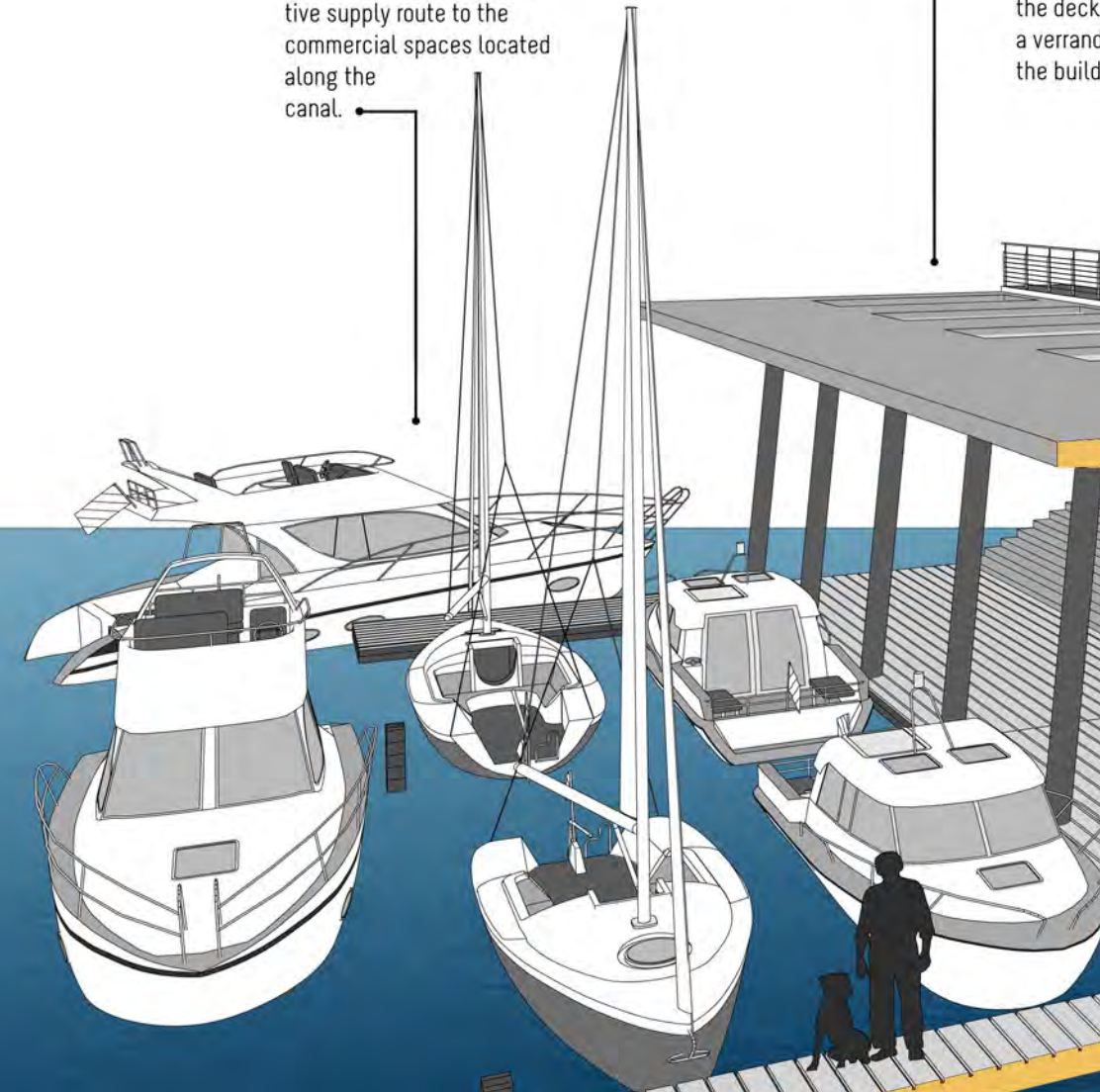
Level +2  
 > 3-bedroom flat 78 m<sup>2</sup> + balcony 4.7 m<sup>2</sup>



Level +3  
 > 1-bedroom flat 38 m<sup>2</sup> + balcony 4.7 m<sup>2</sup>  
 > 1-bedroom flat 33 m<sup>2</sup>



Public waterfront provides docking spots for private boat owners and water trams. It offers an alternative supply route to the commercial spaces located along the canal.



Weather protection allows for continuous use of the canal and walkway in all weather conditions. It creates specific atmosphere with half-translucent roof openings.

Sheltered Garden is hidden within the deck. It connects to the flat by a veranda enveloped by the building's shell.



Covered walkway might be used by pedestrians and cyclists. It offers public space on various levels, both for movement and loitering, with connection to water-themed activities.

Commercial space offers to shops and restaurants a venue which is open both to the canal and the street. The gradual diminution of street level is incorporated into space design, thus bringing the user still closer to the water. The canal side is protected from storm wind and water by side walls and steel shutters.





The Malmö Canal Enclave project draws qualities from the waterfront enclaves in the harbour of Malmö. Meeting point of canal and city shore is treated with various sections, that strive to overcome the level difference and bring private and public city life to the canal side by overlapping their paths.

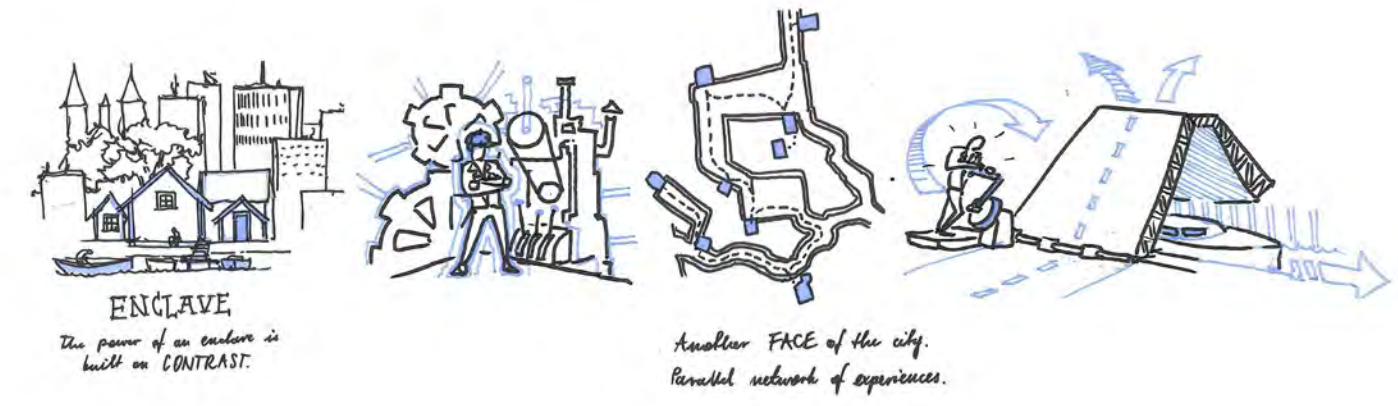
Workshop Floor provides office or retail space in the proximity of the dwelling. It is accessible from the public walk on the house tops. The commercial activity can be extended outside, within the shading frame or on the terrace.



### West Side Malmo Canal Enclave

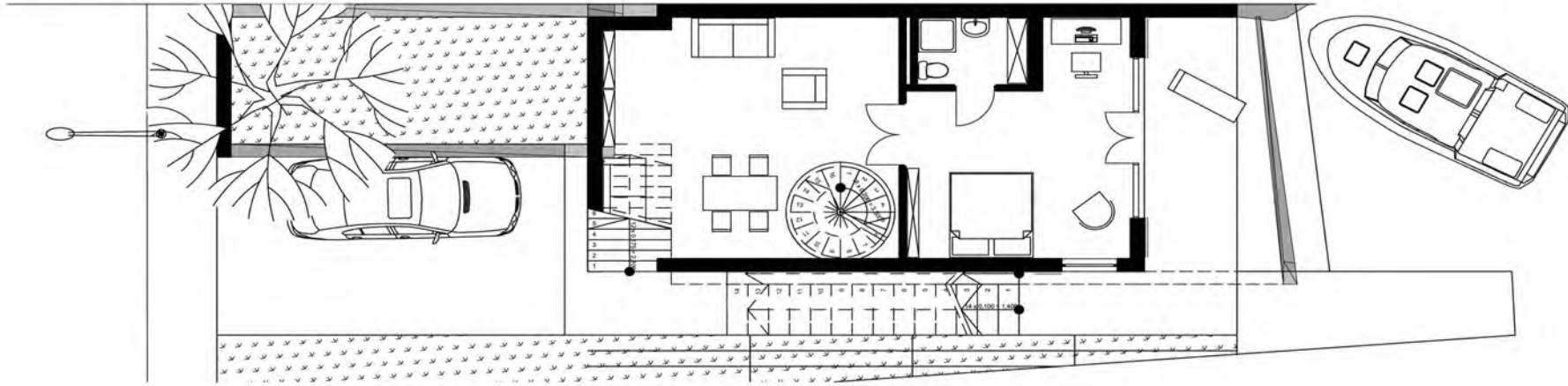
A 3-bedroom detached house (120 m<sup>2</sup>) with studio (35 m<sup>2</sup>). The design aims at overcoming the canal-city level difference with a dwelling configuration. It strives to reconcile the private access to water with the public enjoyment of the canal perspectives. The layout overlaps the direction towards the water (private) with the direction of movement along the water (public).

Public Walkway consists of a chain of terraces overlooking the canal life and water traffic. The path runs along the canal on house tops, at the level of 7.5 m above the water surface.



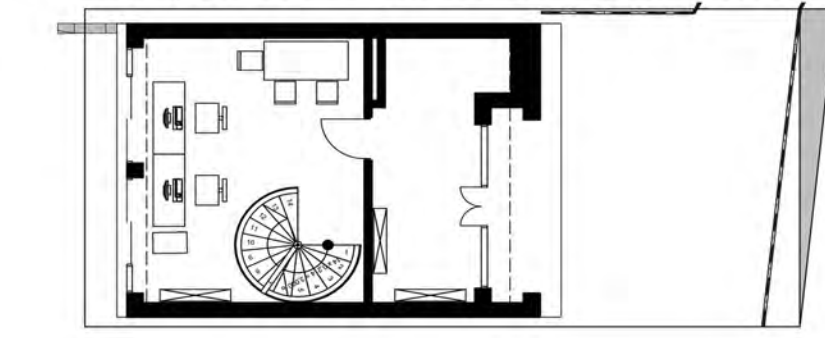
### Level 0

> 1 bedroom & Living space 64 m<sup>2</sup> + terrace 22 m<sup>2</sup>



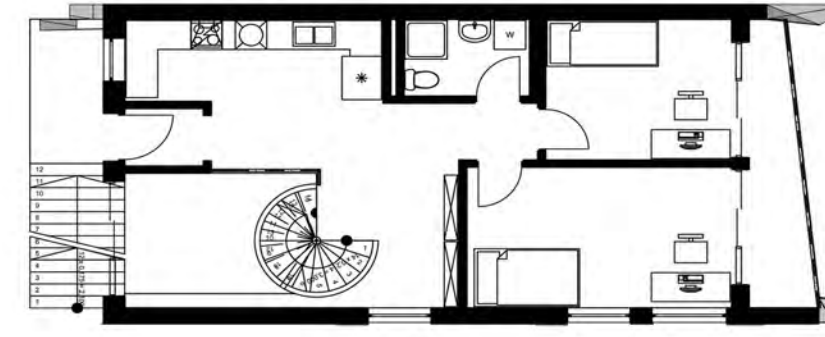
### Level +2

> Studio space 35 m<sup>2</sup> + terrace 28 m<sup>2</sup> (public access)



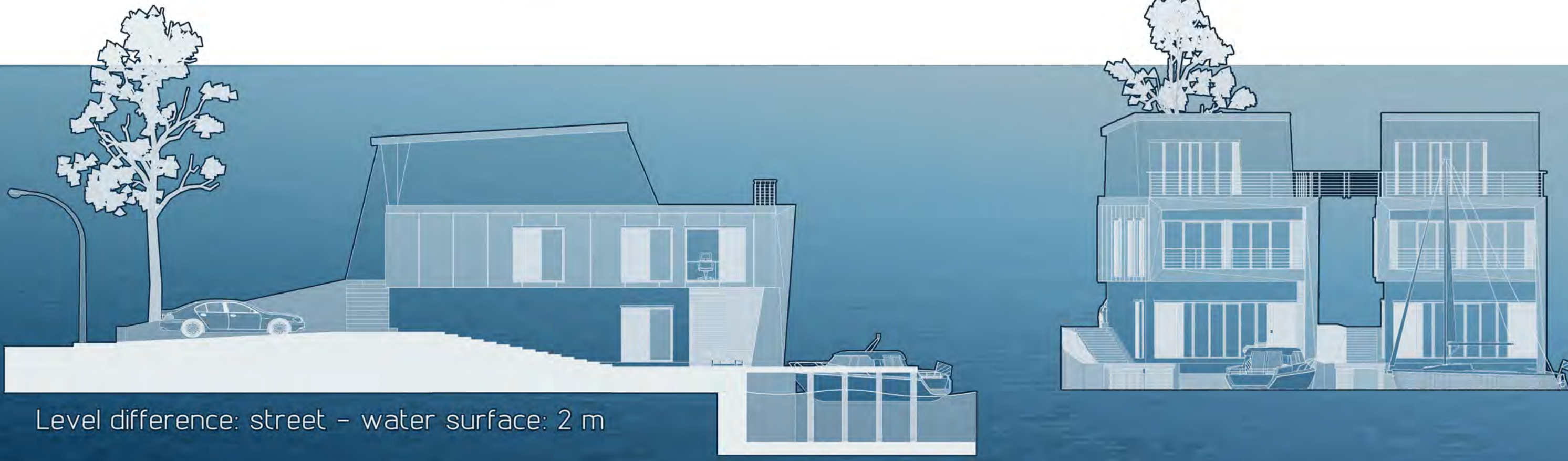
### Level +1

> 2 bedrooms and kitchen 58 m<sup>2</sup> + balcony 6 m<sup>2</sup>



Private Waterfront gives each dwelling an unobstructed access to the canal. The form of the terrace keeps privacy and provides partial shelter from adverse weather conditions. In case of strong winds the interior can be sealed off with the use of steel shutters.

Docking Spot is ensured for each house and it is easily reached from the interior. This way water transport may become more feasible in the area.



Level difference: street - water surface: 2 m



OLAF DUNSKI-2016  
5 WawPL StrID

Proposal created for the competition BOLD II which invites ideas for inventive renovation of housing projects constructed out of prefabricated concrete elements. The aim of the proposal is to give recognizable identity to buildings of the Stegny estate in Warsaw, Poland, thus bringing back the meaning of a local street.

Excuse me, where is the Crimean Street?

*Przepraszam, gdzie Krymska?*



*Aaa to chyba...*

*A może... Chyba, ee...*

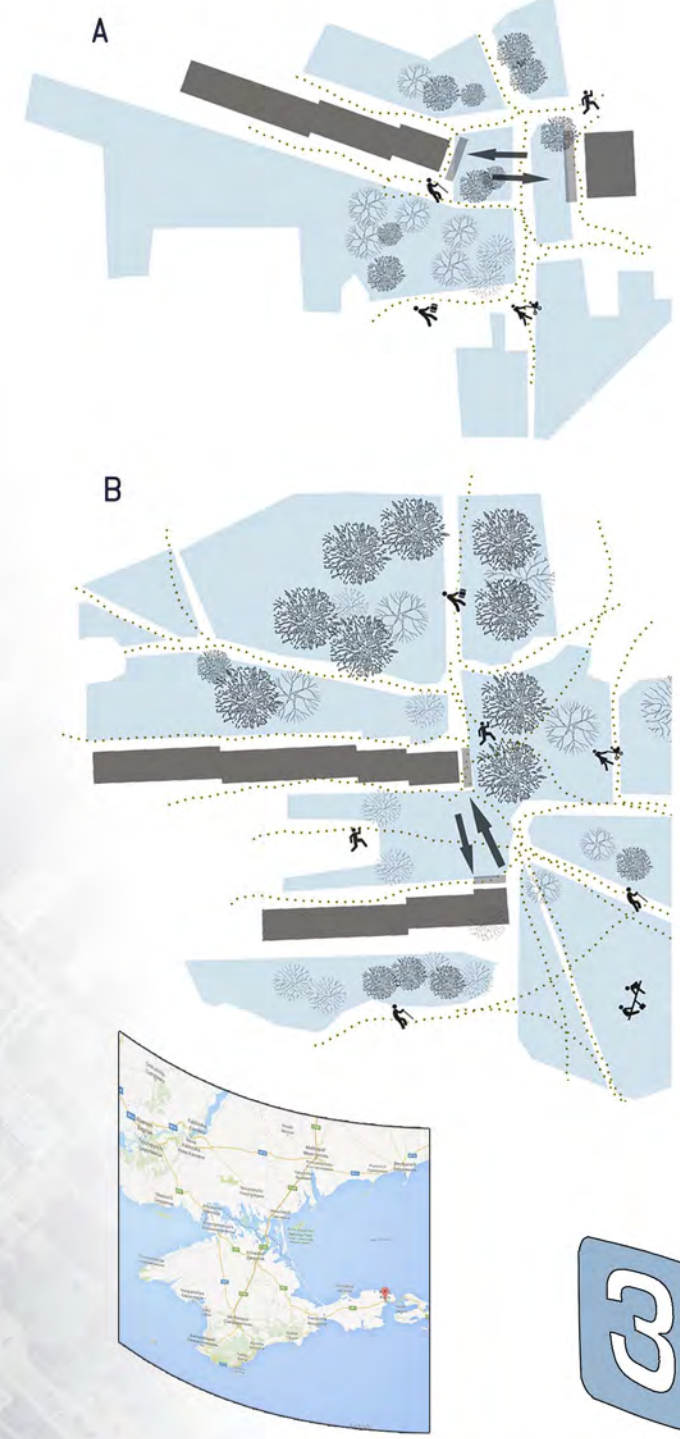
*No tylo tak tu mieszkałam, a...*

*EE.. I think it's over there..Or maybe.. If...*

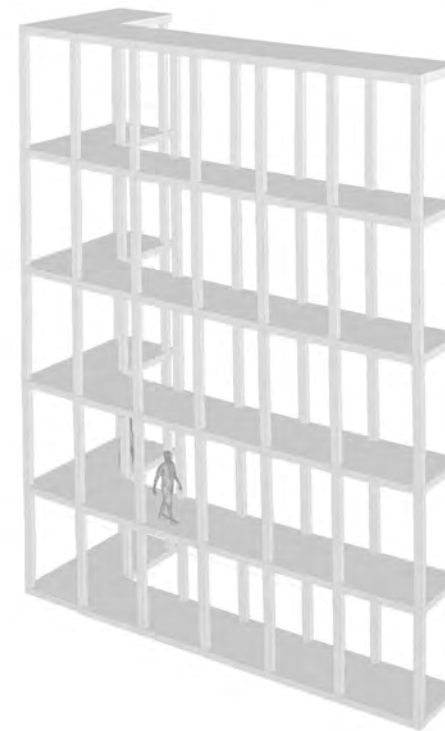
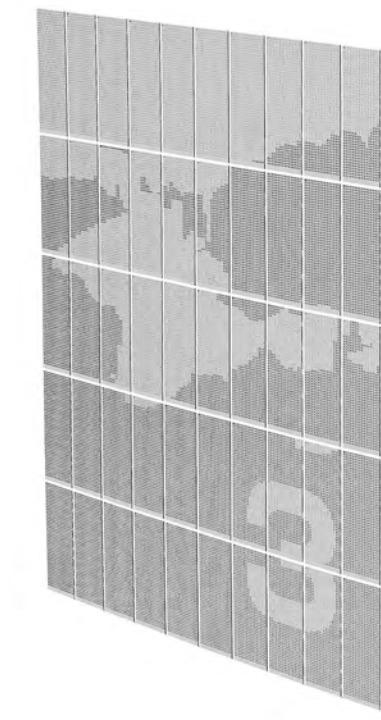
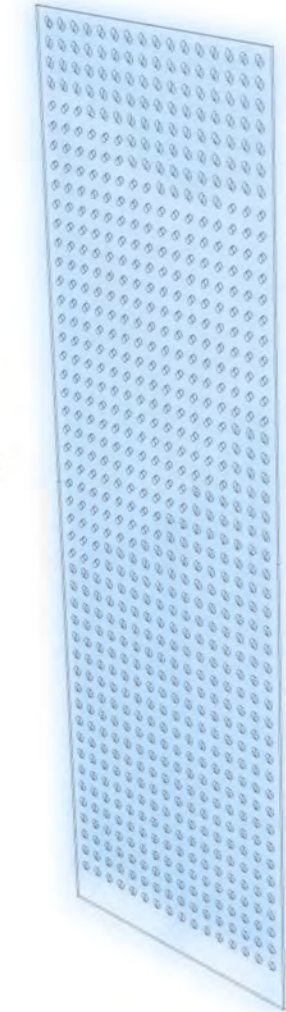
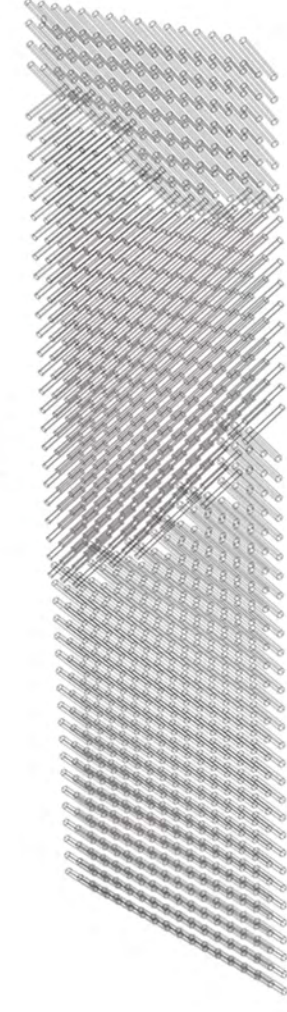
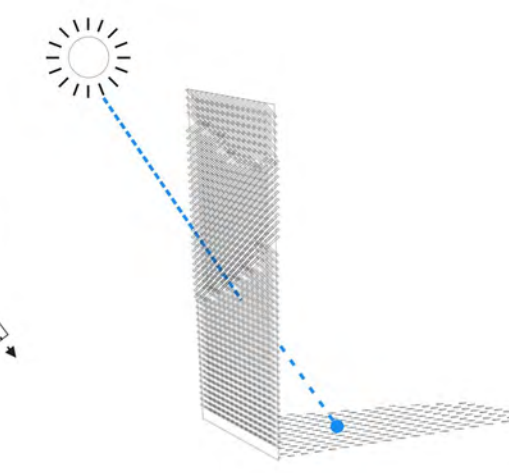
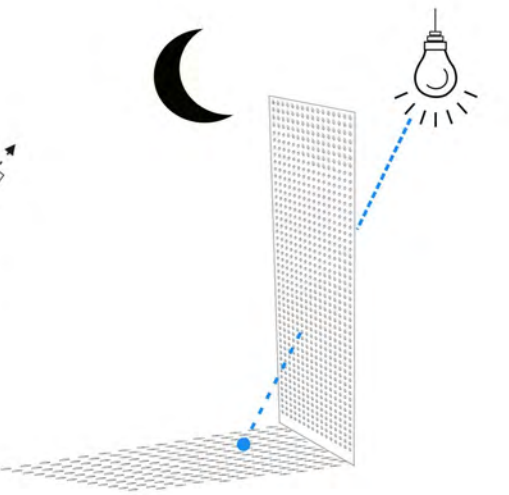
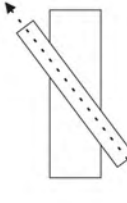
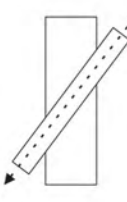
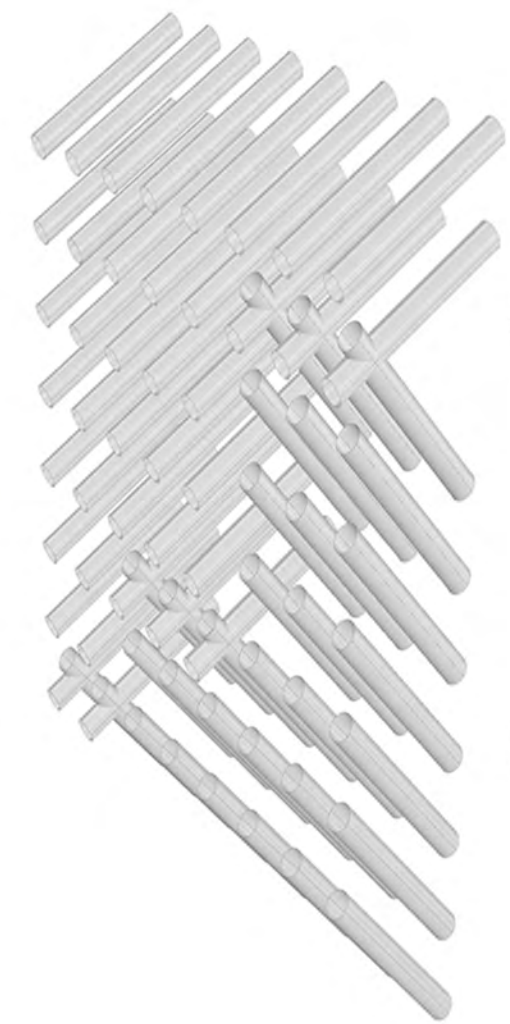
*Eh, I've lived here for so many years and still I don't...*

### Identity of a street

BOLD II competition entry  
Olaf Dunski & Sylwia Pilacik



The specific urban layout of Stegny allows the inhabitants to find their way, but strangers get lost within its uniform architecture. Balconies constructed along the windowless walls would be covered with perforated fibre-cement plates, playing with natural and artificial light to illustrate the names of the local streets that come from geographic forms of Black Sea and Mediterranean.







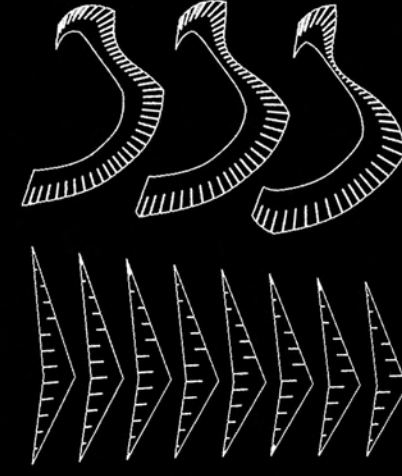
# Godzilla Parametric Pavillion

Olaf Dunski & Brian Wong

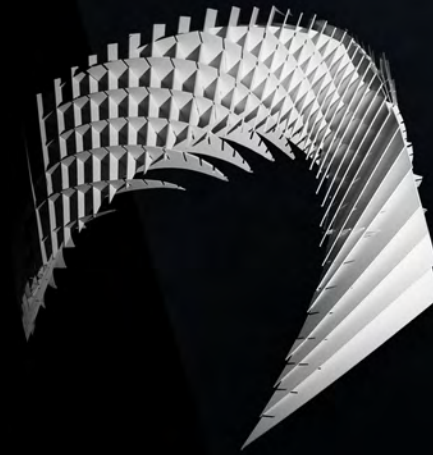
Nicknamed 'Godzilla', the design was created together with Brian Wong as a proposal for a pavilion approx. 10m x 10m x 10m large. The process of form-finding and model fabrication was carried out with the use of script created in the Grasshopper programme. The structure was rationalised into a set of 2d components that were given cuts to fit together.



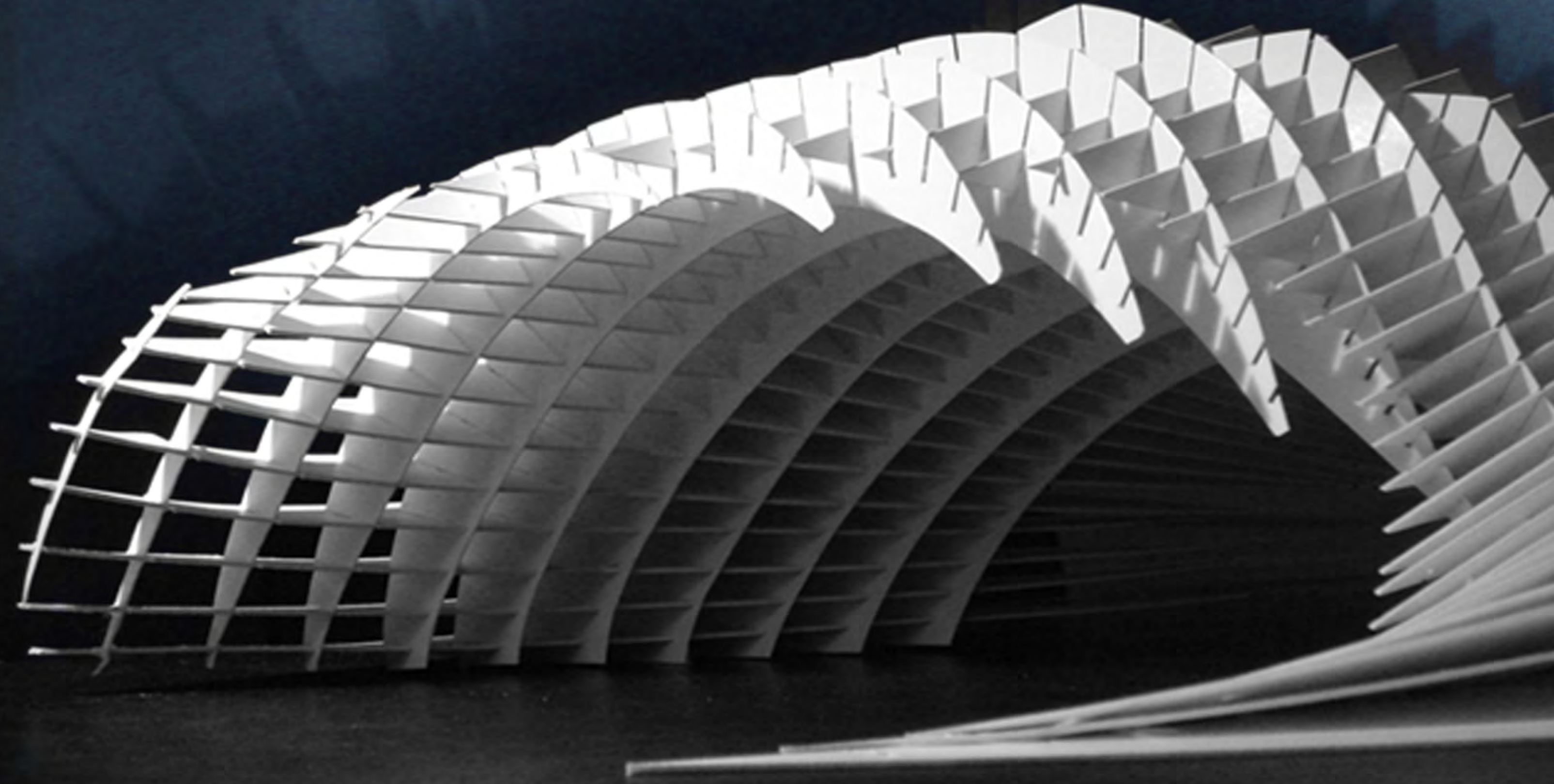
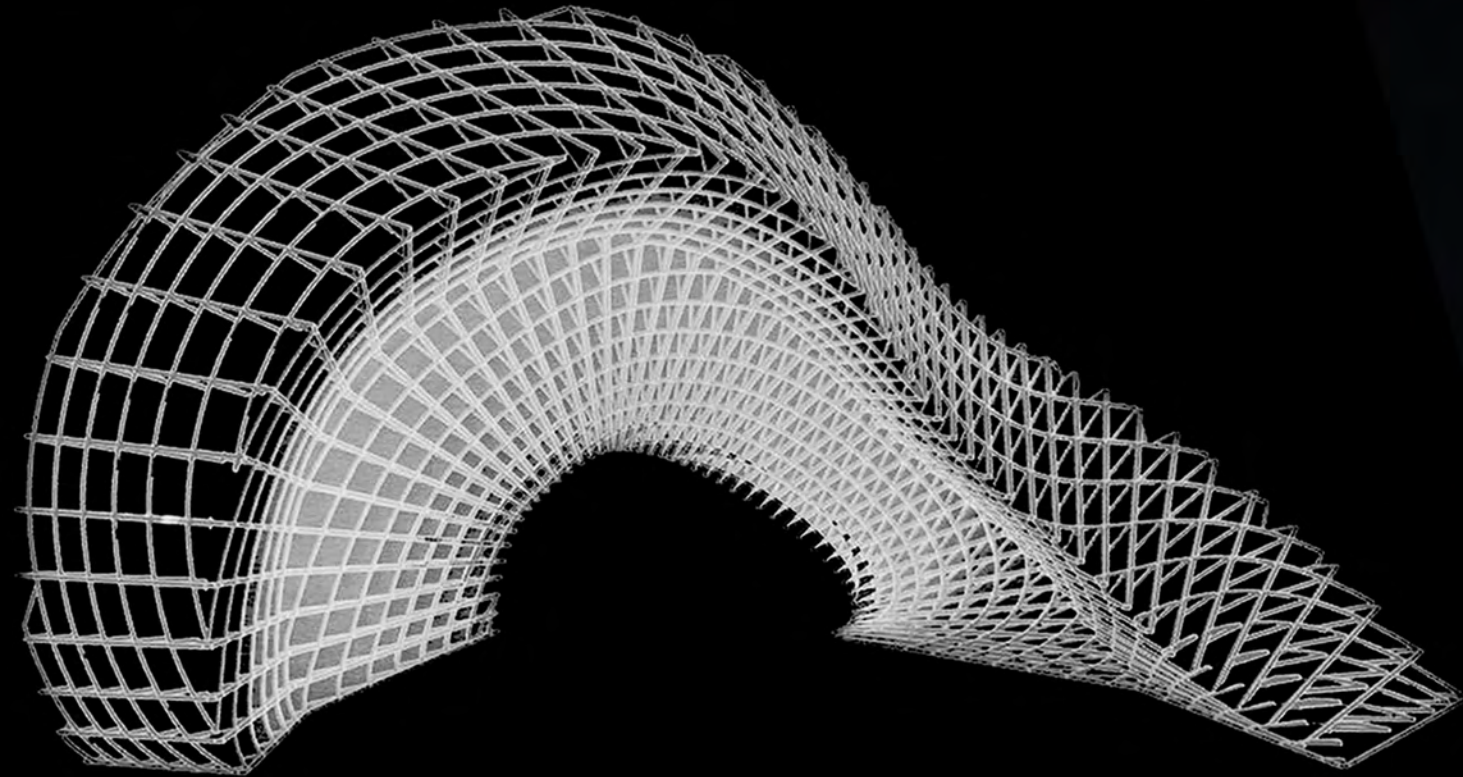
1. Volume based on populating a curve with a predefined section.



2. Fabrication of the 2 sets of 2d structural components.



3. Assembling the pavilion (model). Structure acquires rigidity, light and contrast.







Godzilla Parametric Pavillion  
Olaf Dunski & Brian Wong

Nicknamed 'Godzilla', the design was created together with Brian Wong as a proposal for a pavilion approx. 10m x 10m x 10m large. The process of form-finding and model fabrication was carried out with the use of script created in the Grasshopper programme. The structure was rationalised into a set of 2d components that were given cuts to fit together.





OLAF-DUNSKI-2016

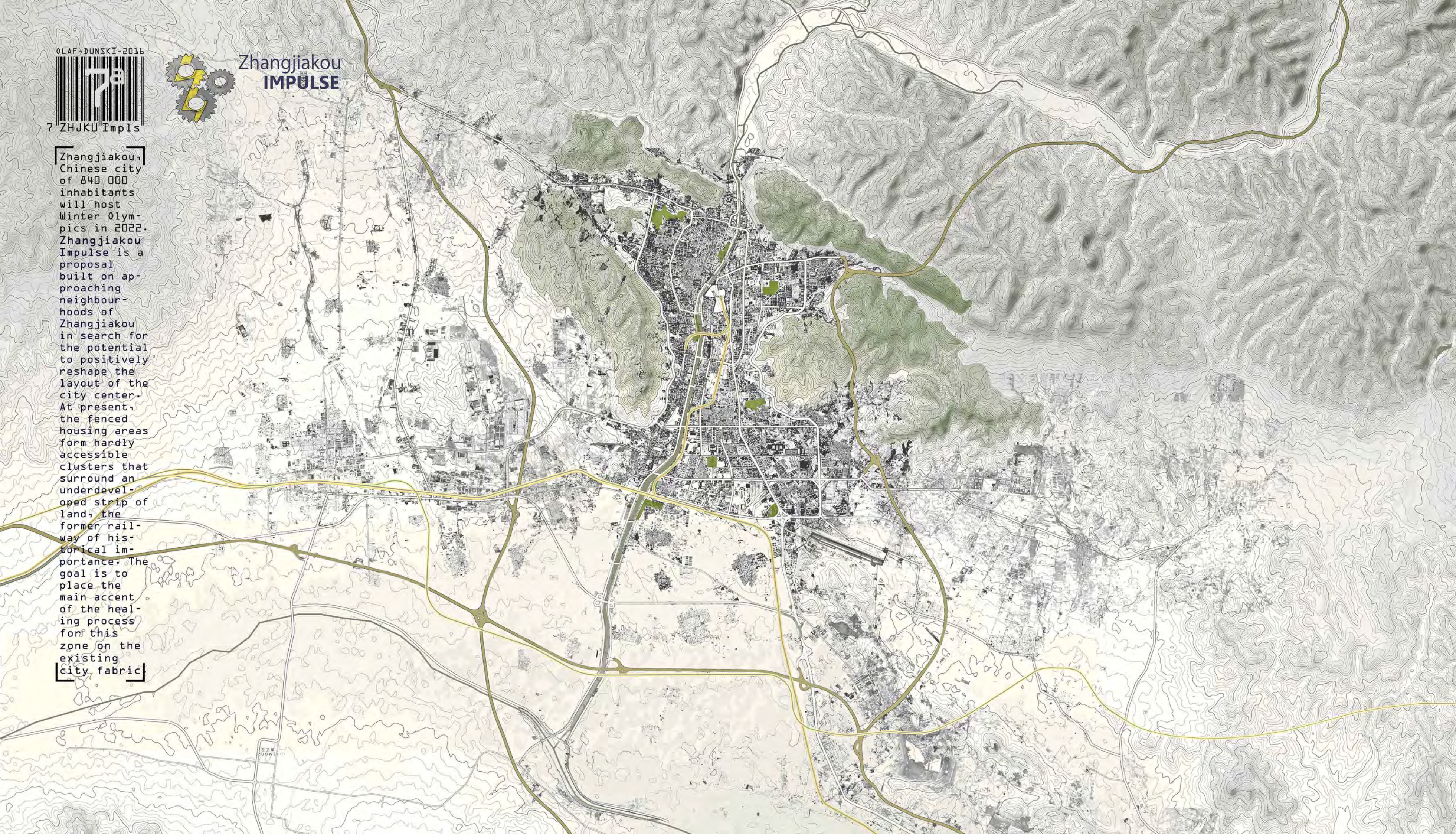


7 ZHJKU Impis



Zhangjiakou  
IMPULSE

Zhangjiakou, Chinese city of 840 000 inhabitants will host Winter Olympics in 2022. Zhangjiakou Impulse is a proposal built on approaching neighbourhoods of Zhangjiakou in search for the potential to positively reshape the layout of the city center. At present, the fenced housing areas form hardly accessible clusters that surround an underdeveloped strip of land, the former railway of historical importance. The goal is to place the main accent of the healing process for this zone on the existing city fabric

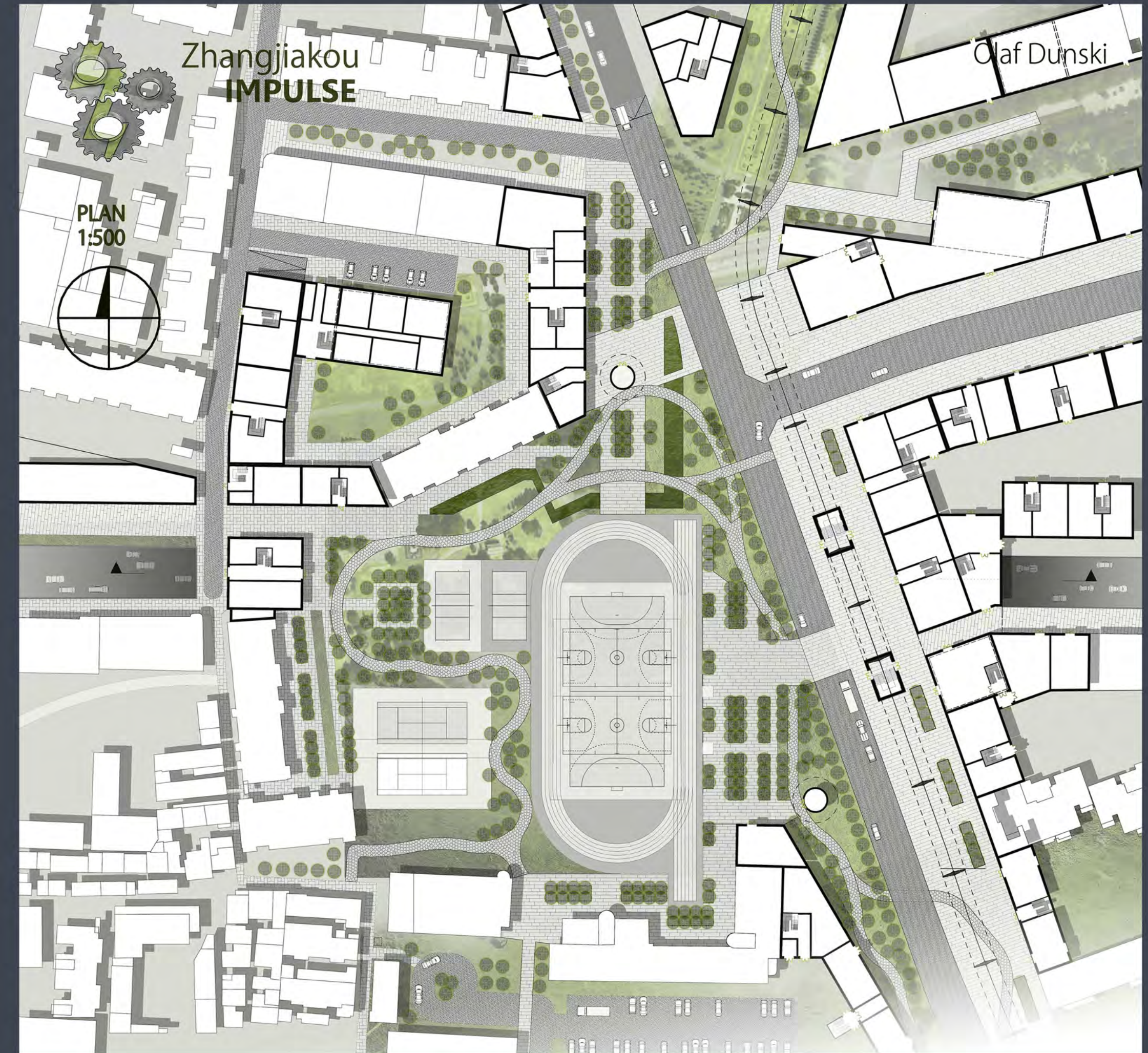
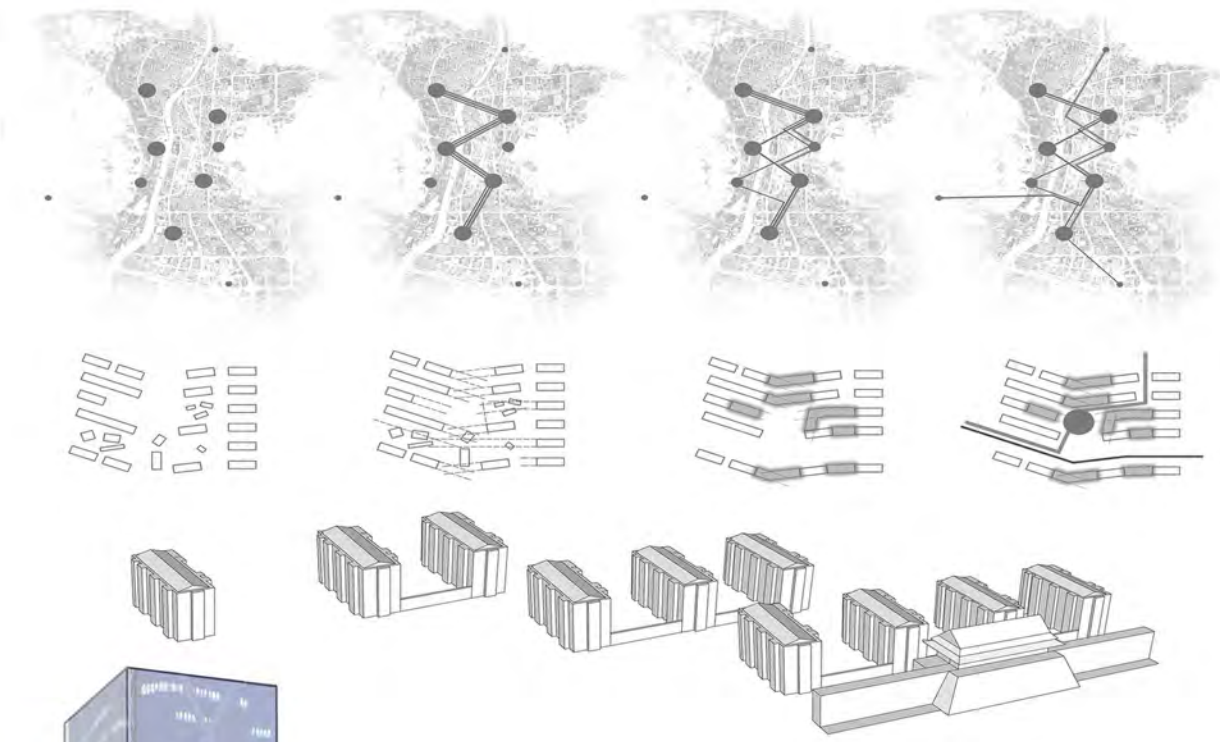






# Zhangjiakou IMPULSE

The new arrangement for Zhangjiakou is knit together by intertwining roads, new monorail and a sequence of park spaces which become the continuous city theme all the way up to the riverfront. This dynamic plan aims for social sustainability and strives to transform the city rather than to deny its axes of spatial arrangement. Compromise between transport and recreational grounds rests on 2 tunnels. The vision is anchored at several local centres with distinctive character.







# Master's House

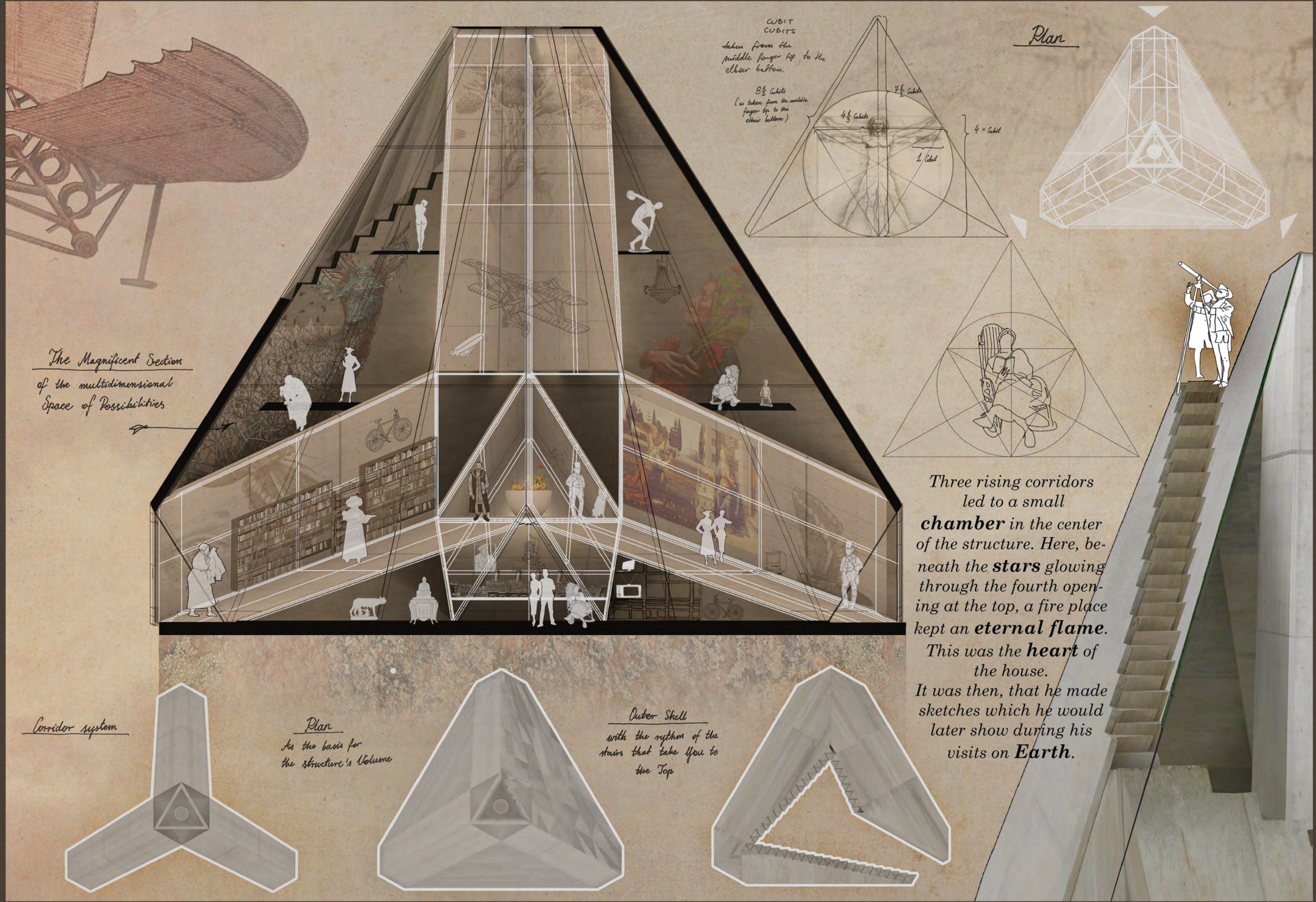
Olaf Dunski & Sylwia Pilacik

Competition proposal: a house design without function and site, based purely on spatial features of form.



## Master's Essentials

They travelled fast. In a blink of an eye they were standing in front of Master's house. In the dusk, he could hardly see where they were, but it did not matter, for this house could sit anywhere. It would have imposed its **structure** equally onto any site because, above all, it was a **finite form**. Neither big nor small, a tetrahedron with all four pinnacles removed, it had four triangular openings in their **place**. Three entrances were all derived from Master's **body lengths** – but the most **human measure** was his **Mind**.



The Magnificent Section of the multidimensional Space of Possibilities

Three rising corridors led to a small chamber in the center of the structure. Here, beneath the stars glowing through the fourth opening at the top, a fire place kept an eternal flame. This was the heart of the house. It was then, that he made sketches which he would later show during his visits on Earth.

Corridor system

Plan  
As the basis for the structure's Volume

Outer Shell  
with the rhythm of the stars that take you to the Top

CUBIT CUBITS  
taken from the middle finger tip to the elbow bottom.  
33 Cubits (as taken from the middle finger tip to the elbow bottom)  
4 1/2 Cubits  
7 1/2 Cubits  
2 Cubit  
4 x Cubit



OLAF-DUNSKI-2016

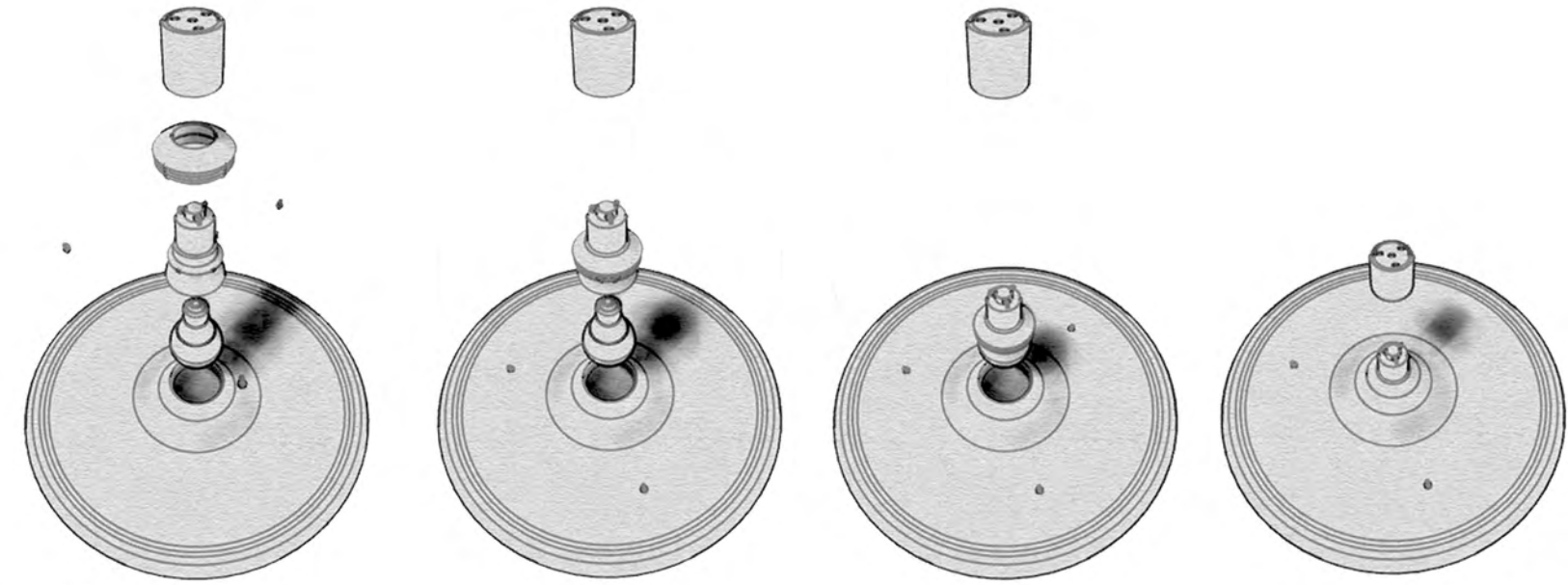
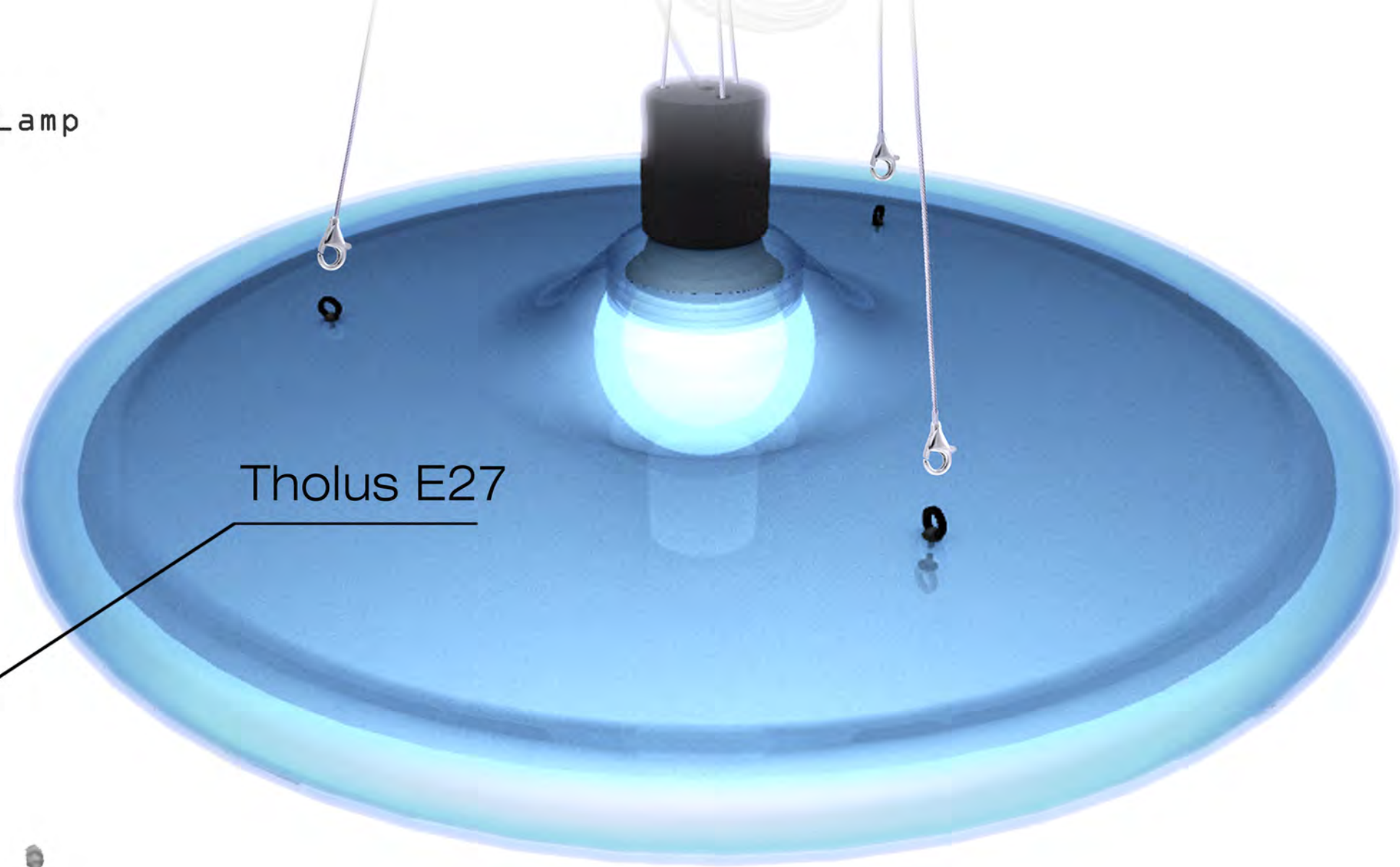
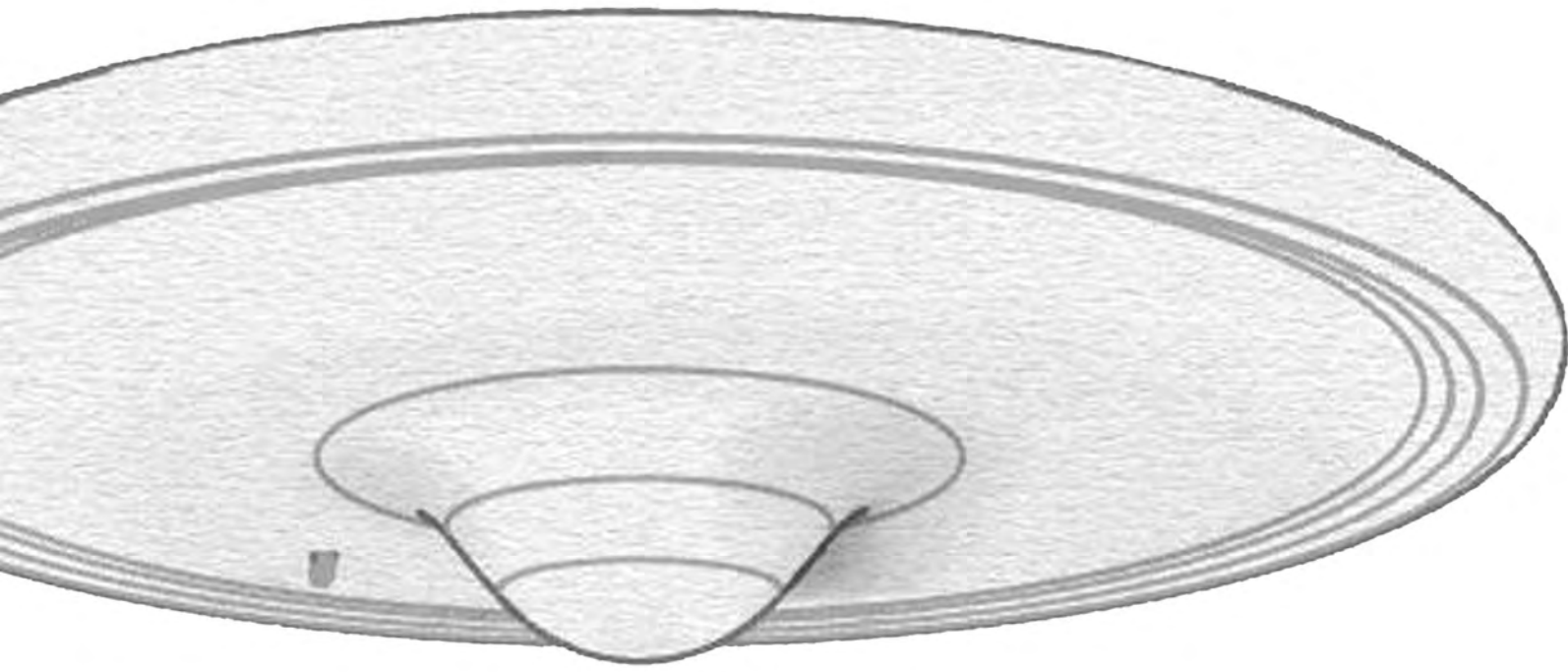


GRAVI Light

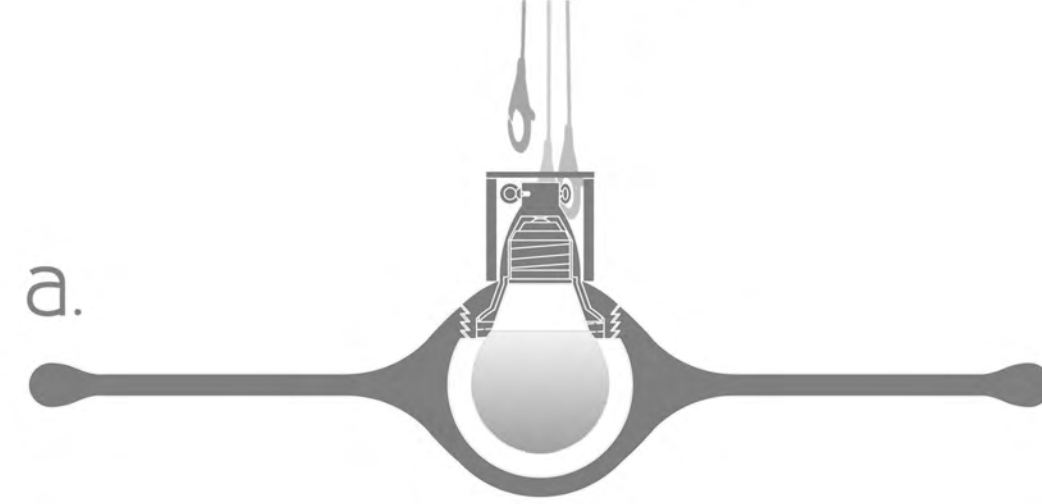
Gravilight lamp is a play with notions of gravity and gravitational poles. Support system is limited to steel strings. The glass plate is designed to create various reflections and to integrate with the light source. The strings allow for various positioning of the lamp which can be a singular star or a myriad of lights.

# 'GraviLight' Lamp

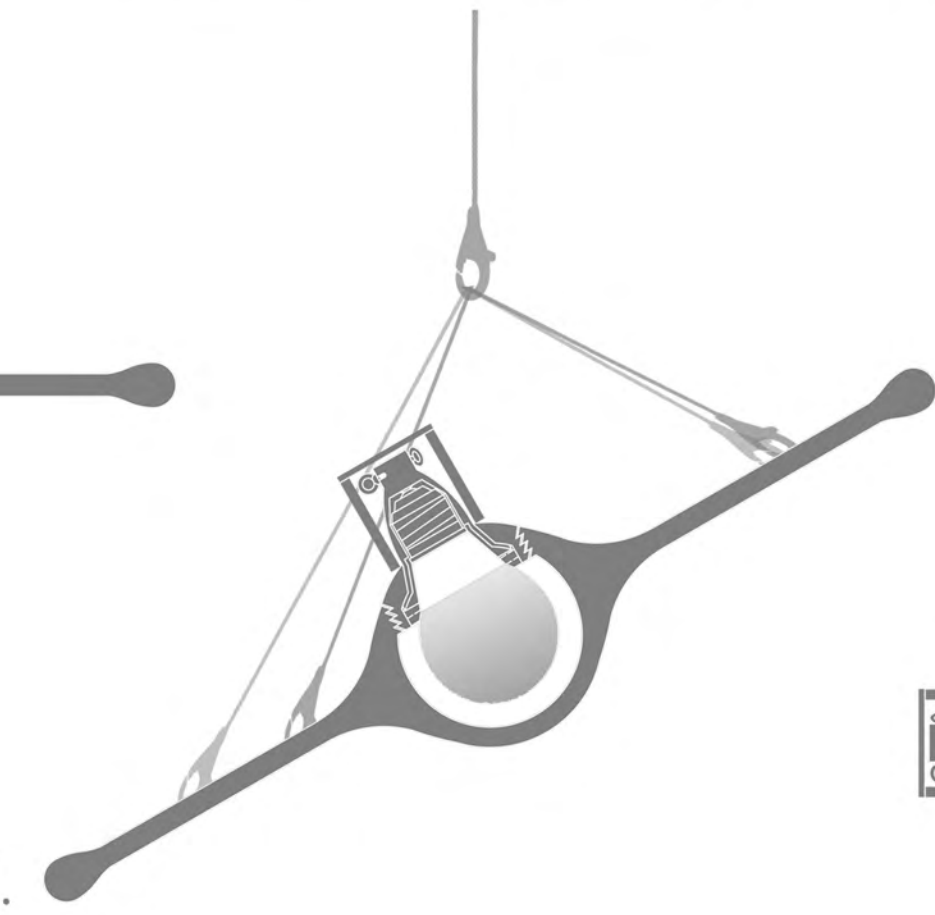
Tholus E27



a.



b.



c.



140

450





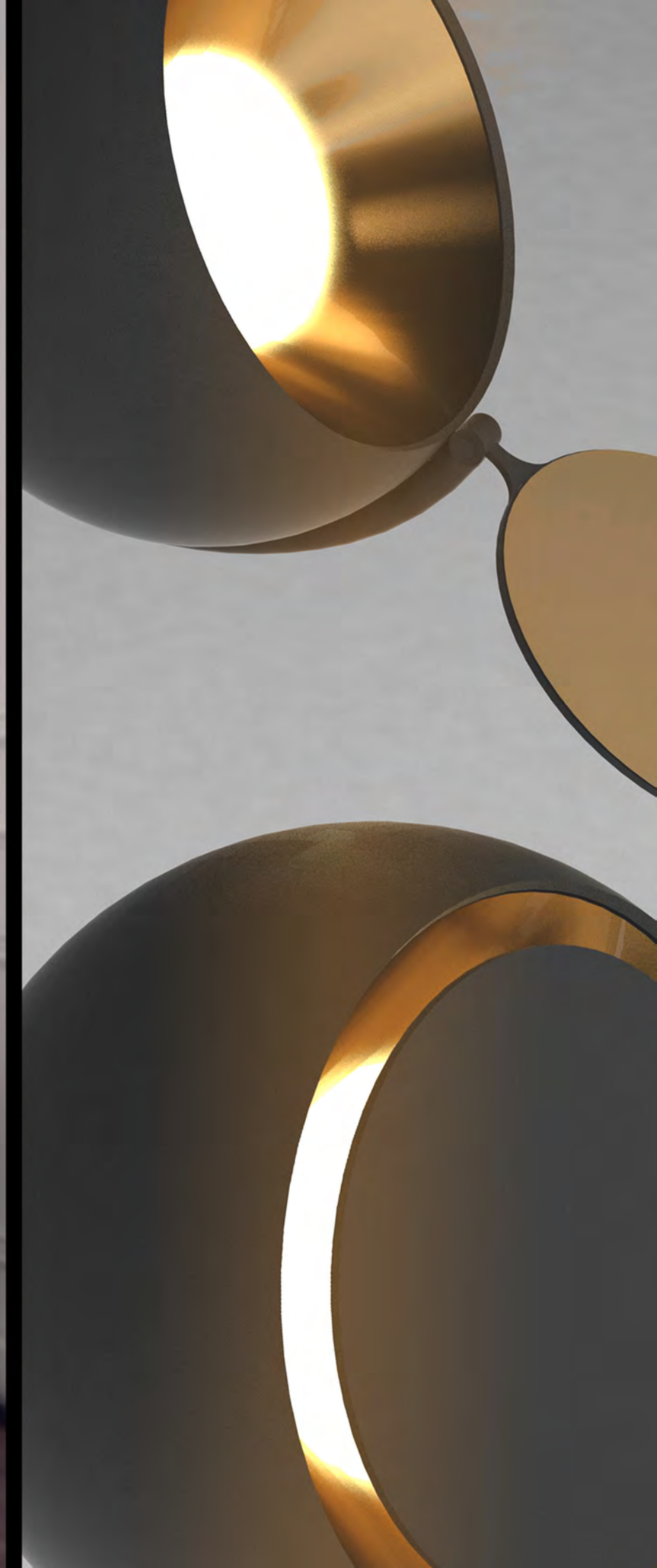
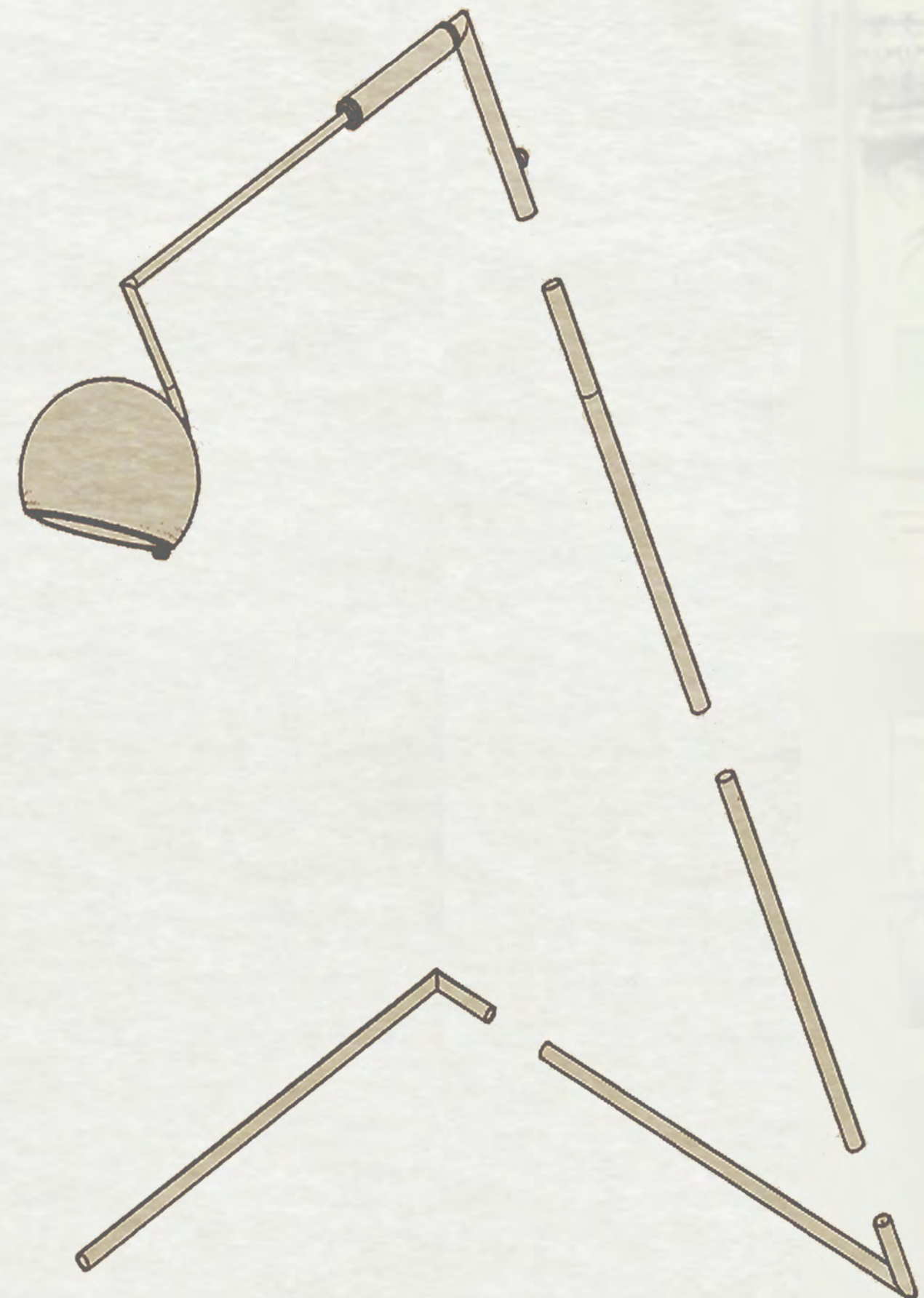
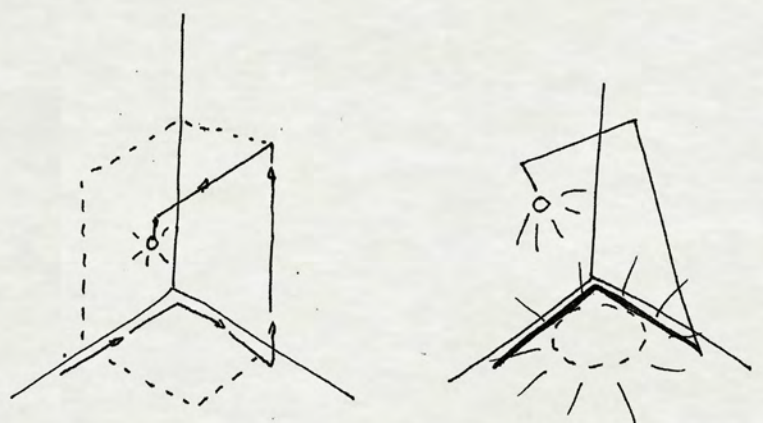
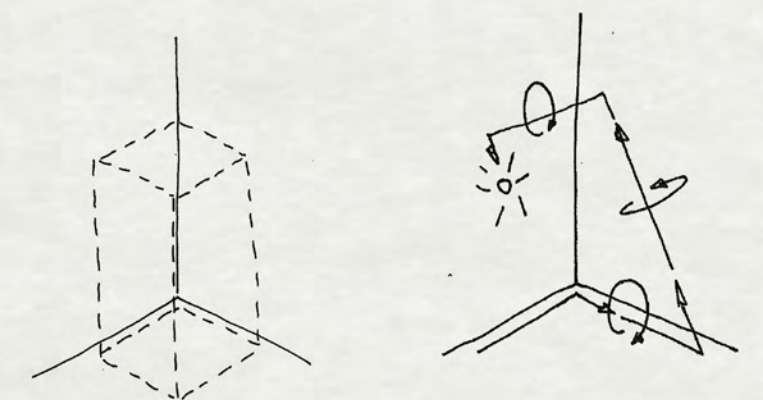
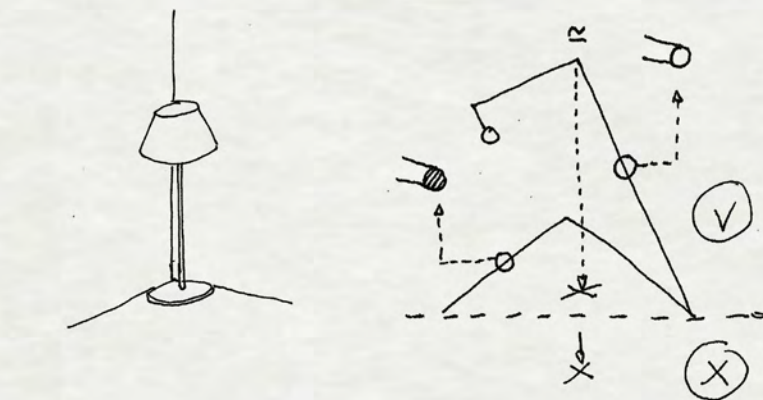
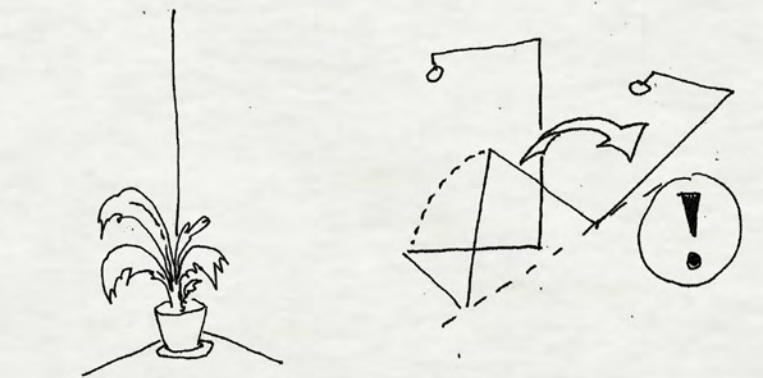
OLAF-DUNSKI-2016



10 90DEG Lamp

# '90 Deg' Lamp

'90 Deg Lamp dances in the corner, striving not to occupy it, but to frame the space that can be given to another object. The lamp is seamlessly composed of a set of hollow and solid stainless steel bars, that come together to form a construction balancing along the laws of stability.







odun.eu